

# Judging Program Belle-City Classic

## Combined Specialty Association of Greater St. Louis

All Clubs are licensed by the American Kennel Club

Show Hours: 7:00 am to 6:00 pm Judging starts at 8:00 am



**Friday, February 28, 2025**

Show Hours: 7:00 am to 10:00 pm

Gateway Vizsla Club #2025465003 & 2025465004 4-6 Month Beginner Puppy #2025465002

Weimaraner Club of Greater St. Louis #2025015401

Dachshund Club of St. Louis, Inc. #2025020401 & #2025020402

\*\*Great Dane Club of Greater Saint Louis, Inc. #2025182701 & #2025182702

\*\*The Saint Bernard Club of Greater Saint Louis, Inc. #2025161501

\*\* Heart of America St. Bernard Club Inc #2025177501

Heart of America Scottish Terrier Club, Inc #2025117501 & 2025117502

\*\*Land of Lincoln Chihuahua Club of Illinois #2025438901 & #2025438902

\*\* Schipperke Club of Greater St. Louis #2025121801

**Saturday, March 1, 2025**

Gateway Vizsla Club Concurrent Specialty & Jr Showmanship #2025465005

Great Dane Club of Greater Saint Louis, Inc. Specialty with NOHS #2025182703

Heart of America St. Bernard Club Inc Specialty with Jr Showmanship, Sweepstakes  
& NOHS #2025177502

**Sunday, March 2, 2025**

Great Dane Club of Greater Saint Louis, Inc. Specialty with NOHS #2025182704

St Bernard Club of Greater St. Louis Inc Concurrent Specialty with Jr Showmanship  
& Sweepstakes #2025161502



**Purina Farms - Purina Event Center**

300 Checkerboard Loop  
Gray Summit, MO 63039

**INDOORS- UNBENCHED**

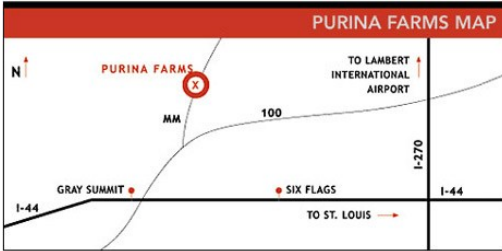


**AMERICAN  
KENNEL CLUB<sup>SM</sup>**

This Show is being held under  
American Kennel Club Rules  
and Regulations

### Routes to the Show

Purina Farms is located just 10 minutes west of Six Flags outside of St Louis on I-44. Take the Gray Summit Exit & go North two blocks on Highway 100. Turn left on County Rd MM & proceed less than one mile to Purina Farms **PLEASE NOTE – THE ENTRANCE IS ON THE LEFT JUST PAST THE SHEEP BARN.**



### Routes to the Show

Purina Farms is located just 10 minutes west of Six Flags outside of St Louis on I-44. Take the Gray Summit Exit & go North two blocks on Highway 100. Turn left on County Rd MM & proceed less than one mile to Purina Farms **PLEASE NOTE – THE ENTRANCE IS ON THE LEFT JUST PAST THE SHEEP BARN.**

### Show Veterinarians (on call each day)

#### Veterinary Specialty Services

(24-hour Emergency Services)

1021 Howard Drive

Manchester, MO 63021

(636) 227-6100 (emergency call line)

#### Eureka Veterinary Clinic – Dr. George Daman

(24-hour Emergency Services)

1415 W. 5th Street

Eureka, MO 63025

(314) 610-2930 (emergency call line)

#### Fox Creek Veterinary Hospital

(open daily from 8:00 am to 8:00 pm)

18962 Hwy 100, Wildwood, MO • 63069 (636) 458-6569

### SHOW PHOTOGRAPHER

#### Melia Photography

7613 S. 72nd Ave., LaVista, NE 68128

(402) 331-5071 • meliaphotography.com • Meliaphotography@cox.net

*(Select and Purchase Pictures on the Website)*

### Partial Stewarding Provided By Wright Steward Association 8024 Bill Moss Rd, White House, TN 37188

AKC Weekend Club Hotline: (919) 816-3955 or visit the AKC Event Cancellations page at:  
<https://www.akc.org/sports/event-cancellations/> for event cancellation information.

*The AKC is committed to creating a safe and respectful sport environment for all. If you need to talk to someone, or need help, please call 800.656.HOPE (National Sexual Assault Hotline) or text HOME to 741-741 for free, 24/7, confidential services from trained crisis counselors.*



## Foy Trent Dog Shows LLC

AKC Annually Licensed Superintendents:

James Davis • Caleb O'Brien

Foy Trent • Susan W. Trent

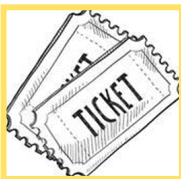
P.O. Box C, Sturgeon, MO 65284

(573) 687-2101 • [www.foytrentdogshows.com](http://www.foytrentdogshows.com)

## Judges

Laura E Abbott-Licht (95675) .....	1020 Indian Trail Lawrenceburg, KY 40342
Bev Barringer-Ruggeri .....	5199 Paradise Lane, High Ridge, MO 63049
Mr. Eugene Blake (5267) .....	8946 E 60th St, Tulsa, OK 74145
Mike Bockhorn .....	2 Hilltop Lane Collinsville, IL 62234
Ms. Bridget Brown (102665).....	4603 Rosser Farms Pkwy, Bessemer, AL 35022-5503
Mrs. Barbara L Burns .....	1222 Hillcrest Dr, Freeport IL61032
Mrs. Lucretia Coonrod (111397).....	815 W Main, Tecumseh, OK 74873
Mr. Pat Cunningham (56262) .....	7915 County Road 127, Brainerd, MN 56401
Marta DeMerath.....	4095 Boyd Rd, Belleville, IL 62223
Mrs. Anna May Fleischli Brown (6300) .....	1709 W Vernon Ave, Springfield, IL 62704
Barb Griffin.....	170 Bridgeview Lane, St. Louis, MO 63129
Robert (Bob) Hallahan Jr. ....	3064 Beck Addition Rd, Union, MO 63084
Cassandra Iken.....	8822 Rosewood Hills, Edwardsville, IL 62025
Lynn Jech (16178) .....	505 Southview Drive, Richmond, MO 64085
Mr. Richard Lashbrook (7340) .....	2029 Monteford Ct, Springfield, IL 62704
Liz Lufrano.....	17979 Vierra Canyon Rd, Salinas, CA 93907
Sharon Masnick (97181) .....	760 Ray Rd, Hemingway, SC 29554
Mrs. Charlotte A Mielziner (43992) .....	5325 Gutermuth Rd, Saint Charles, MO 63304
Mrs. Wanda B Pevahouse (93140) .....	60 Dogwood Cir, Jackson, TN 38305
Mr. John C Ramirez (1814).....	8526 Imperial Hwy, Downey, CA 90242
Charlene Rutar (94495) .....	15405 E 21st St, Noblesville, IN 46060
Mrs. Barbara J Sarti-Allen (6345) .....	182 Mc 7030, Flippin, AR 72634
Mrs. Gina M Schag (108997) .....	175 Hazel Rd., Simpson, IL 62985
Mrs. Diana L Skibinski (7258).....	10766 Hanley St, Crown Point, IN 46307
John P Wade (5936).....	299 Steptoe Ln, Washoe Valley, NV 89704
Mr. Jerry M Watson (2413).....	130 Carrington St, Savannah, TN 38372
Mrs. Carole A Wilson (5960).....	Po Box 396, Smithton, IL 62285
Mr. Wood Wornall (95931).....	37036 Sandpiper Rd, Millsboro, DE 19966
Ms. Susan E Yotive (7138).....	1145 Discovery Dr, Worthington, OH 43085
Ms. Faye Zahorchak (100309).....	1710 Stegman Ave, McKeesport, PA 15133
Maureen Zwerk .....	804 Kingston Terrace Ct, St Charles, MO 63301

**Please Note: (\*) appearing after a judge's name/assignment denotes Provisional/Permit status for that assignment on the date the judging panel was finalized and approved by the AKC.**



### Raffle

The Great Dane Club of Greater St. Louis, Inc.  
is having a raffle table. Please check it out.

**A portion of each entry fee will go to the  
Illinois Federation of Dog Clubs and Owners**

**These are Self-Cleaning shows! Please help us keep the show site  
clean by cleaning up after your dogs**

~ Judging Program by Group Order ~

	Friday Show1	Friday Show2	Saturday	Sunday
	Ring Time	Ring Time	Ring Time	Ring Time
<b>SPORTING BREEDS</b>				
Vizslas	2 8:45am	2 12:45pm	8 10:15am	
<i>Vizsla Sweepstakes</i>	2 8:00am	2 12:00pm		
<i>Vizsla Jr Showmanship</i>	2 8:30am	2 12:00pm	8 10:15am	
<i>Vizsla 4-6 Beg Puppy</i>		2 12:45pm		
<i>Vizsla Obedience</i>	5 11:00am			
Weimaraners	4 10:05am			
<i>Weimaraner Sweepstakes</i>	4 10:00am			
<b>HOUND BREEDS</b>				
Dachshunds (Longhaired)	1 9:00am	1 1:00pm		
Dachshunds (Smooth)	1 9:00am	1 1:00pm		
Dachshunds (Wirehaired)	1 9:00am	1 1:00pm		
<i>Dachshund Sweepstakes</i>		1 12:00pm		
<i>Dachshund Jr Showmanship</i>		1 1:00pm		
<b>WORKING BREEDS</b>				
Great Danes	7 9:30am	7 1:30pm	8 8:00am	4 8:30am
<i>Great Dane Sweepstakes</i>		7 1:00pm		
St Bernards (St Bernard Club of GStL)				
Saint Bernard	8 9:40am			4 11:15am
<i>Saint Bernard Sweepstakes</i>	8 9:00am			4 11:30am
<i>Saint Bernard Jr Showmanship</i>	8 9:30am			
St Bernards (HOA St Bernard Club )		8 1:00pm	8 12:30pm	
<i>Saint Bernard Sweepstakes</i>		8 12:30pm	8 12:00pm	
<i>Saint Bernard Jr Showmanship</i>		8 1:00pm	8 12:30pm	
<b>TERRIER BREEDS</b>				
Scottish Terriers	6 11:00am	6 2:30pm		
<i>Scottish Terrier Sweepstakes</i>	6 10:15am			
<i>Scottish Terrier Jr Showmanship</i>	6 10:45am			
<b>TOY BREEDS</b>				
Chihuahuas (Long coat)	3 9:40am	3 1:00pm		
Chihuahuas (Smooth Coat)	3 9:40am	3 1:00pm		
<i>Chihuahua Sweepstakes</i>	3 9:00am	3 12:30pm		
<i>Chihuahua Jr Showmanship</i>	3 9:30am	3 1:00pm		
<b>NON-SPORTING BREEDS</b>				
Schipperke	5 2:30pm			
<i>Schipperke Sweepstakes</i>	5 2:00pm			
<i>Schipperke Jr Showmanship</i>	5 2:00pm			

## ~ Schedule of Judging ~

Friday, February 28, 2025

OFFICIAL NOTICE: Substitute Judges.

Friday – Lynn Jech will judge the Heart of America Saint Bernard Specialty Sweepstakes in place of Jennifer Berry

### Dachshund Club of St Louis Show 1

There are 63 dogs entered in this Specialty with a total of 81 entries.

### Dachshund Club of St Louis Show 2

There are 70 dogs entered in this Specialty with a total of 71 entries.

#### Ring 1

Laura E Abbott-Licht (63)

9:00am

#### Dachshunds (Smooth)

- 1 Puppy (9-12 Months) Dogs
- 2 12-18 Months Dogs

#### Winners Dog

- 2 12-18 Months Bitches
- 1 Amateur Owner Handler Bitches
- 4 Bred-By-Exhibitor Bitches
- 1 Open Standard Bitches

#### Winners Bitch

- 1 Veteran Dogs
- 2 Dual Champion Bitches
- 1 Best of Variety (0-1)

#### Dachshunds (Wirehaired)

- 2 Puppy (6-9 Months) Dogs
- 1 Bred-By-Exhibitor Dogs
- 1 American Bred Dogs

#### Winners Dog

- 4 Puppy (6-9 Months) Bitches
- 2 Puppy (9-12 Months) Bitches
- 2 12-18 Months Bitches
- 2 Bred-By-Exhibitor Bitches
- 3 American Bred Bitches
- 2 Open Miniature Bitches
- 1 Open Standard Bitches

#### Winners Bitch

- 10 Best of Variety (6-4)

#### Dachshunds (Longhaired)

- 2 Puppy (9-12 Months) Dogs
- 2 12-18 Months Dogs
- 2 Bred-By-Exhibitor Dogs
- 2 American Bred Dogs

#### Winners Dog

- 4 Bred-By-Exhibitor Bitches

#### Winners Bitch

- 6 Best of Variety (4-2)

#### Best of Breed

#### Ring 1

Mr. Eugene Blake (71)

1:00pm

#### 1 Jr Open

#### Dachshunds (Smooth)

- 1 Puppy (9-12 Months) Dogs
- 2 12-18 Months Dogs

#### Winners Dog

- 2 12-18 Months Bitches
- 1 Amateur Owner Handler Bitches
- 4 Bred-By-Exhibitor Bitches
- 2 Open Standard Bitches

#### Winners Bitch

- 1 Veteran Dogs
- 2 Dual Champion Bitches
- 2 Best of Variety (1-1)

#### Dachshunds (Wirehaired)

- 2 Puppy (6-9 Months) Dogs
- 1 Bred-By-Exhibitor Dogs
- 1 American Bred Dogs
- 1 Open Standard Dogs

#### Winners Dog

- 4 Puppy (6-9 Months) Bitches
- 2 Puppy (9-12 Months) Bitches
- 2 12-18 Months Bitches
- 2 Bred-By-Exhibitor Bitches
- 3 American Bred Bitches
- 2 Open Miniature Bitches
- 1 Open Standard Bitches

#### Winners Bitch

- 11 Best of Variety (7-4)

#### Dachshunds (Longhaired)

- 2 Puppy (9-12 Months) Dogs
- 1 12-18 Months Dogs
- 1 Amateur Owner Handler Dogs
- 1 Bred-By-Exhibitor Dogs
- 2 American Bred Dogs

#### Winners Dog

- 1 Puppy (6-9 Months) Bitches
- 4 Bred-By-Exhibitor Bitches
- 1 Open Miniature Bitches
- 1 Open Standard Bitches

#### Winners Bitch

- 7 Best of Variety (6-1)

#### Best of Breed

#### Bev Barringer-Ruggeri (18)

12:00pm

- 3 Sweepstakes (Puppy 6-9) 1-2
- 6 Sweepstakes (Puppy 9-12) 3-3
- 9 Sweepstakes (Puppy 12-18) 5-4

#### Best in Sweepstakes

## Friday, February 28, 2025

### Gateway Vizsla Club Show 1

There are 36 dogs entered in this Specialty with a total of 44 entries.

#### Ring 2

**Robert (Bob) Hallahan Jr (10)**

8:00am

- 1 Sweepstakes (Puppy 9-12) Dogs
- 1 Sweepstakes (Puppy 12-18) Dogs
- 3 Sweepstakes (Puppy 6-9) Bitches
- 1 Sweepstakes (Puppy 9-12) Bitches

**Best in Sweepstakes**

**Best of Opposite**

- 1 Sweepstakes (Veterans 7-9 Years) Bitches
- 1 Sweepstakes (Veterans 9-11 Years) Bitches
- 2 Sweepstakes (Veterans 11+Years) Bitches

**Best Veteran in Sweepstakes**

**Sharon Masnick (3)**

8:30am

- 3 Jr Open Intermediate Age 12-15

**Mr. Jerry M Watson (30)**

8:45am

- 1 Puppy (6-9 Months) Dogs
- 1 12-18 Months Dogs
- 2 Bred-By-Exhibitor (Puppy) Dogs
- 1 Open Dogs

**Winners Dog**

- 1 Puppy (6-9 Months) Bitches
- 1 Puppy (9-12 Months) Bitches
- 4 Bred-By-Exhibitor (Puppy) Bitches
- 1 Bred-By-Exhibitor (Adult) Bitches
- 2 Open Bitches

**Winners Bitch**

- 1 Veteran Dogs
- 15 Best of Breed (8-7)

### Gateway Vizsla Club Show 2

There are 36 dogs entered in this Specialty with a total of 44 entries.

There are 3 dogs entered in this

4-6 Month Beg Puppy Competition with a total of 3 entries.

#### Ring 2

**Mrs. Lucretia Coonrod (13)**

12:00pm

- 1 Sweepstakes (Puppy 9-12) Dogs
- 1 Sweepstakes (Puppy 12-18) Dogs
- 2 Sweepstakes (Puppy 6-9) Bitches
- 1 Sweepstakes (Puppy 9-12) Bitches

**Best in Sweepstakes**

**Best of Opposite**

- 1 Sweepstakes (Veterans 7-9 Years) Dogs
- 1 Sweepstakes (Veterans 7-9 Years) Bitches
- 1 Sweepstakes (Veterans 9-11 Years) Bitches
- 2 Sweepstakes (Veterans 11+Years) Bitches

**Best Veteran in Sweepstakes**

**Best of Opposite**

- 3 Jr Open Intermediate Age 12-15

**John P Wade (34)**

12:45pm

- 3 4-6 Month Beginner Puppy 2-1

- 1 Puppy (6-9 Months) Dogs
- 1 12-18 Months Dogs
- 2 Bred-By-Exhibitor (Puppy) Dogs
- 1 Open Dogs

**Winners Dog**

- 1 Puppy (6-9 Months) Bitches
- 1 Puppy (9-12 Months) Bitches
- 4 Bred-By-Exhibitor (Puppy) Bitches
- 1 Bred-By-Exhibitor (Adult) Bitches
- 3 Open Bitches

**Winners Bitch**

- 16 Best of Breed (9-7)

## Friday, February 28, 2025

### Land of Lincoln Chihuahua Club of Illinois

There are 34 dogs entered in this Specialty  
with a total of 43 entries.

#### Ring 3 Gina M Schag (8)

9:00am

##### Long Coat

- 2 Sweepstakes (Puppy 6-9) Dogs
- 1 Sweepstakes (Puppy 9-12) Dogs

##### Best in Sweepstakes

- 1 Sweepstakes (Veterans 7+ Years) Bitches

##### Best in Veteran Sweepstakes

##### Smooth Coat

- 3 Sweepstakes (Puppy 6-9) Dogs
- 1 Sweepstakes (Puppy 6-9) Bitches

##### Best in Sweepstakes

##### Best of Opposite

### Land of Lincoln Chihuahua Club of Illinois

There are 32 dogs entered in this Specialty  
with a total of 41 entries.

#### Ring 3 Barbara Burns (8)

12:30pm

##### Long Coat

- 1 Sweepstakes (Puppy 6-9) Dogs
- 1 Sweepstakes (Puppy 9-12) Dogs
- 1 Sweepstakes (Puppy 6-9) Bitches

##### Best in Sweepstakes

##### Best of Opposite

- 1 Sweepstakes (Veterans 7+ Years) Bitches

##### Best in Veteran Sweepstakes

##### Smooth Coat

- 3 Sweepstakes (Puppy 6-9) Dogs
- 1 Sweepstakes (Puppy 6-9) Bitches

##### Best in Sweepstakes

##### Best of Opposite

#### Carole Wilson (2)

9:30am

- 1 JS Open Inter Age 12 to 15
- 1 JS Open Jr. Age 9 to 12

#### Mr. Eugene Blake (33)

9:40am

##### Long Coat

- 2 Puppy (6-9 Months) Dogs
- 1 Puppy (9-12 Months) Dogs
- 1 12-18 Months Dogs
- 1 Bred-By-Exhibitor (Adult) Dogs

##### Winners Dog

- 3 Puppy (6-9 Months) Bitches
- 1 American Bred Bitches
- 3 Open Bitches

##### Winners Bitch

- 1 Veteran Bitches
- 5 Best of Variety (3-2)

##### Smooth Coat

- 2 Puppy (6-9 Months) Dogs
- 1 12-18 Months Dogs
- 1 Bred-By-Exhibitor (Puppy) Dogs
- 1 Bred-By-Exhibitor (Adult) Dogs
- 1 Open Dogs

##### Winners Dog

- 2 Puppy (6-9 Months) Bitches
- 1 Puppy (12-18 Months) Bitches
- 1 Bred-By-Exhibitor (Adult) Bitches
- 1 Open Bitches

##### Winners Bitch

- 1 Veteran Bitch
- 3 Best of Variety (2-1)

##### Best of Breed

#### Mrs. Diana L Skibinski (33)

1:00pm

- 1 JS Open Inter Age 12 to 15
- 1 JS Open Jr. Age 9 to 12

##### Long Coat

- 2 Puppy (6-9 Months) Dogs
- 1 Puppy (9-12 Months) Dogs
- 1 12-18 Months Dogs

##### Winners Dog

- 2 Puppy (6-9 Months) Bitches
- 1 American Bred Bitches
- 3 Open Bitches

##### Winners Bitch

- 1 Veteran Bitches
- 5 Best of Variety (4-1)

##### Smooth Coat

- 2 Puppy (6-9 Months) Dogs
- 1 12-18 Months Dogs
- 1 Bred-By-Exhibitor (Puppy) Dogs
- 1 Open Dogs

##### Winners Dog

- 2 Puppy (6-9 Months) Bitches
- 1 Puppy (12-18 Months) Bitches
- 1 Bred-By-Exhibitor (Adult) Bitches
- 1 Open Bitches

##### Winners Bitch

- 1 Veteran Bitches
- 4 Best of Variety (2-2)

##### Best of Breed

**Friday, February 28, 2025**

**Weimaraner Club of Greater St. Louis**

There are 9 dogs entered in this Specialty  
with a total of 12 entries.

**Ring 4**  
**Mike Bockhorn (1)**

**10:00am**

- 1 Sweepstakes (Puppy 12-18) Bitches

**Best in Sweepstakes**

**John P Wade (9)**

**10:05am**

- 1 12-18 Months Dogs

**Winners Dog**

- 1 Puppy (9-12 Months) Bitches
- 1 Bred-By-Exhibitor (Adult) Bitches

**Winners Bitch**

- 1 Field Bitches
- 5 Best of Breed (1-4)

**Gateway Vizsla Club**

**Weimaraner Club of Greater St. Louis**

**Obedience Trial**

Vizsla armband (5) Weimaraner armbands (6-7)

**Ring 5**  
**Mrs. Charlotte A Mielziner (3)**

**11:00am**

- 1 Novice B Obedience (6)

**11:10am**

**5 minute walk through**

**The following classes begin after noon in the listed order**

- 1 Novice A Obedience (5)

**11:20am**

**5 minute walk through**

- 1 Beginner Novice B Obedience (7)

**Schipperke Club of Greater St. Louis**

There are 22 dogs entered in this Specialty  
with a total of 29 entries.

**Ring 5**  
**Sharon Masnick (8)**

**2:00pm**

- 1 Sweepstakes (Puppy 6-9) Dogs
- 1 Sweepstakes (Puppy 12-18) Bitches

**Best in Sweepstakes**

**Best of Opposite**

- 1 Sweepstakes (Veterans 8-10 Years) Dogs
- 1 Sweepstakes (Veterans 12+ Years) Dogs
- 1 Sweepstakes (Veterans 12+ Years) Bitches

**Best in Veteran Sweepstakes**

**Best of Opposite**

- 1 JS Open Sr. Age 15 to 18
- 2 JS Open Inter Age 12 to 15

**Mr. Wood Wornall (21)**

**2:30pm**

- 1 Puppy (6-9 Months) Dogs
- 1 Bred-By-Exhibitor Dogs
- 1 Open Dogs

**Winners Dog**

- 3 Bred-By-Exhibitor Bitches
- 1 Open Bitches

**Winners Bitch**

- 1 Veteran (12+ Years) Dogs
- 1 Veteran (12+ Years) Bitches
- 12 Best of Breed (6-6)



## Friday, February 28, 2025

### Heart of America Scottish Terrier Club, Inc

There are 33 dogs entered in this Specialty  
with a total of 48 entries.

#### Ring 6 (Show 1)

Liz Lufrano (13)

##### 10:15am

- 1 Sweepstakes (Puppy 6-9) Dogs
- 3 Sweepstakes (Puppy 9-12) Dogs
- 3 Sweepstakes (Puppy 12-18) Dogs
- 2 Sweepstakes (Puppy 9-12) Bitches
- 4 Sweepstakes (Puppy 12-18) Bitches

##### Best in Sweepstakes

##### Best of Opposite

Mr. Pat Cunningham (1)

##### 10:45am

- 1 JS Open Jr. Age 9 to 12

Mr. John C Ramirez (34)

##### 11:00am

- 2 Puppy (6-9 Months) Dogs
- 2 Puppy (9-12 Months) Dogs
- 3 12-18 Months Dogs
- 1 Bred-By-Exhibitor (Puppy) Dogs
- 1 Bred-By-Exhibitor (Adult) Dogs
- 1 Open Dogs

##### Winners Dog

- 2 Puppy (9-12 Months) Bitches
- 4 12-18 Months Bitches
- 2 Bred-By-Exhibitor (Puppy) Bitches
- 1 Bred-By-Exhibitor (Adult) Bitches
- 2 Open Bitches

##### Winners Bitch

- 13 Best of Breed (9-4)

### Heart of America Scottish Terrier Club, Inc

There are 30 dogs entered in this Specialty  
with a total of 30 entries.

#### Ring 6 (Show 2)

John P Wade (30)

##### 2:30pm

- 2 Puppy (6-9 Months) Dogs
- 2 Puppy (9-12 Months) Dogs
- 1 12-18 Months Dogs
- 1 Bred-By-Exhibitor (Puppy) Dogs
- 1 Bred-By-Exhibitor (Adult) Dogs
- 1 Open Dogs

##### Winners Dog

- 2 Puppy (9-12 Months) Bitches
- 3 12-18 Months Bitches
- 1 Bred-By-Exhibitor (Puppy) Bitches
- 1 Bred-By-Exhibitor (Adult) Bitches
- 2 Open Bitches

##### Winners Bitch

- 13 Best of Breed (9-4)

### Great Dane Club of Greater Saint Louis, Inc.

There are 39 dogs entered in this Specialty  
with a total of 39 entries.

#### Ring 7 (Show 1)

Ms. Faye Zahorchak (39)

##### 9:30am

- 1 Puppy (6-9 Months) Dogs
- 1 Puppy (9-12 Months) Dogs
- 2 12-18 Months Dogs
- 1 Bred-By-Exhibitor (Puppy) Dogs
- 1 Open Black Dogs
- 2 Open Fawn Dogs
- 1 Open Harlequin Dogs

##### Winners Dog

- 6 Puppy (6-9 Months) Bitches
- 2 Puppy (9-12 Months) Bitches
- 1 12-18 Months Bitches
- 3 Bred-By-Exhibitor (Puppy) Bitches
- 3 Bred-By-Exhibitor (Adult) Bitches
- 1 Open Fawn Bitches
- 1 Open Mantle Bitches

##### Winners Bitch

- 13 Best of Breed (8-5)

### Great Dane Club of Greater Saint Louis, Inc.

There are 38 dogs entered in this Specialty  
with a total of 45 entries.

#### Ring 7 (Show 2)

Barb Griffin (7)

##### 1:00pm

- 1 Sweepstakes (Puppy 6-9) Dogs
- 1 Sweepstakes (Puppy 9-12) Dogs
- 5 Sweepstakes (Puppy 6-9) Bitches

##### Best in Sweepstakes

##### Best of Opposite

Mr. John C Ramirez (38)

##### 1:30pm

- 1 Puppy (6-9 Months) Dogs
- 1 Puppy (9-12 Months) Dogs
- 2 12-18 Months Dogs
- 1 Bred-By-Exhibitor (Puppy) Dogs
- 1 Open Black Dogs
- 2 Open Fawn Dogs
- 1 Open Harlequin Dogs

##### Winners Dog

- 6 Puppy (6-9 Months) Bitches
- 2 Puppy (9-12 Months) Bitches
- 1 12-18 Months Bitches
- 3 Bred-By-Exhibitor (Puppy) Bitches
- 3 Bred-By-Exhibitor (Adult) Bitches
- 1 Open Fawn Bitches
- 1 Open Mantle Bitches

##### Winners Bitch

- 12 Best of Breed (6-6)

## Friday, February 28, 2025

### The Saint Bernard Club of Greater Saint Louis, Inc.

There are 28 dogs entered in this Specialty  
with a total of 38 entries.

#### Ring 8 Marta DeMerath (9)

9:00am

- 3 Sweepstakes (Puppy 9-12) Dogs
- 1 Sweepstakes (Puppy 12-18) Dogs
- 5 Sweepstakes (Puppy 9-12) Bitches

**Best in Sweepstakes**

**Best of Opposite**

#### Mr. Richard Lashbrook (2)

9:30am

- 2 JS Open Inter Age 12 to 15

#### Mr. John C Ramirez (27)

9:40am

- 3 Puppy (9-12 Months) Dogs
- 1 Bred-By-Exhibitor Dogs

**Winners Dog**

- 1 Puppy (6-9 Months) Bitches
- 4 Puppy (9-12 Months) Bitches
- 1 Amateur Owner Handler Bitches
- 3 Bred-By-Exhibitor Bitches
- 2 American Bred Bitches

**Winners Bitch**

- 12 Best of Breed (8-4)

### Heart of America St. Bernard Club Inc

There are 26 dogs entered in this Specialty  
with a total of 35 entries.

#### Ring 8 Lynn Jech (8)

12:30pm

- 2 Sweepstakes (Puppy 9-12) Dogs
- 1 Sweepstakes (Puppy 12-18) Dogs
- 4 Sweepstakes (Puppy 9-12) Bitches
- 1 Sweepstakes (Puppy 12-18) Bitches

**Best in Sweepstakes**

**Best of Opposite**

#### Mrs. Wanda B Pevahouse (27)

1:00pm

- 2 JS Open Inter Age 12 to 15
- 2 Puppy (9-12 Months) Dogs
- 1 Bred-By-Exhibitor Dogs

**Winners Dog**

- 3 Puppy (9-12 Months) Bitches
- 1 12-18 Months Bitches
- 1 Amateur Owner Handler Bitch es
- 3 Bred-By-Exhibitor Bitches
- 2 American Bred Bitches

**Winners Bitch**

- 12 Best of Breed (8-4)

## Saturday, March 1, 2025

### Great Dane Club of Greater Saint Louis, Inc.

There are 45 dogs entered in this Specialty  
with a total of 45 entries.

#### Ring 8 Ms. Bridget Brown (45)

##### 8:00am

- 2 Puppy (6-9 Months) Dogs
- 1 Puppy (9-12 Months) Dogs
- 2 12-18 Months Dogs
- 2 Bred-By-Exhibitor (Puppy) Dogs
- 2 Open Fawn Dogs
- 1 Open Harlequin Dogs

##### Winners Dog

- 6 Puppy (6-9 Months) Bitches
- 3 Puppy (9-12 Months) Bitches
- 1 12-18 Months Bitches
- 3 Bred-By-Exhibitor (Puppy) Bitches
- 4 Bred-By-Exhibitor (Adult) Bitches
- 2 Open Fawn Bitches
- 1 Open Mantle Bitches

##### Winners Bitch

- 15 Best of Breed (9-6)

### Heart of America St. Bernard Club Inc

There are 28 dogs entered in this Specialty  
with a total of 36 entries.

#### Ring 8 Maureen Zwerk (7)

##### 12:00pm

- 1 Sweepstakes Puppy (9-12 Months) Dogs
- 1 Sweepstakes 12-18 Months Dogs
- 3 Sweepstakes Puppy (9-12 Months) Bitches
- 2 Sweepstakes 12-18 Months Bitches

##### Best in Sweepstakes

##### Best of Opposite

#### Mrs. Anna May Fleischli Brown (29)

##### 12:30pm

- 2 Puppy (9-12 Months) Dogs
- 1 Bred-By-Exhibitor Dogs

##### Winners Dog

- 1 Puppy (6-9 Months) Bitches
- 2 Puppy (9-12 Months) Bitches
- 2 12-18 Months Bitches
- 1 Amateur Owner Handler Bitches
- 4 Bred-By-Exhibitor Bitches
- 2 American Bred Bitches

##### Winners Bitch

- 12 Best of Breed (8-4)
- 2 JS Open Inter Age 12 to 15

### Gateway Vizsla Club

There are 33 dogs entered in this Specialty  
with a total of 36 entries.

#### Ring 8 Mrs. Charlene Rutar (36)

##### 10:15am

- 3 JS Open Inter Age 12 to 15
- 1 Puppy (6-9 Months) Dogs
- 1 12-18 Months Dogs
- 2 Bred-By-Exhibitor (Puppy) Dogs
- 1 American Bred Dogs
- 1 Open Dogs

##### Winners Dog

- 1 Puppy (6-9 Months) Bitches
- 1 Puppy (9-12 Months) Bitches
- 4 Bred-By-Exhibitor (Puppy) Bitches
- 1 Bred-By-Exhibitor (Adult) Bitches
- 3 Open Bitches

##### Winners Bitch

- 1 Veteran Dogs
- 16 Best of Breed (9-7)

## Sunday, March 2, 2025

OFFICIAL NOTICE: Substitute Judges.

Sunday – Cassandra Iken will judge the St Bernard Club of Greater St. Louis Inc Specialty Sweepstakes in place of Shirley Goodman.

### Great Dane Club of Greater Saint Louis, Inc.

There are 43 dogs entered in this Specialty with a total of 43 entries.

#### Ring 4

*Ms. Susan E Yotive (43)*

##### 8:30am

- 2 Puppy (6-9 Months) Dogs
- 1 Puppy (9-12 Months) Dogs
- 2 12-18 Months Dogs
- 2 Bred-By-Exhibitor (Puppy) Dogs
- 2 Open Fawn Dogs
- 1 Open Harlequin Dogs

##### Winners Dog

- 5 Puppy (6-9 Months) Bitches
- 2 Puppy (9-12 Months) Bitches
- 1 12-18 Months Bitches
- 3 Bred-By-Exhibitor (Puppy) Bitches
- 4 Bred-By-Exhibitor (Adult) Bitches
- 2 Open Fawn Bitches
- 1 Open Mantle Bitches

##### Winners Bitch

- 15 Best of Breed (8-7)

### St Bernard Club of Greater St. Louis Inc

There are 23 dogs entered in this Specialty with a total of 30 entries.

#### Ring 4

*Cassandra Iken (6)*

##### 11:15am

- 1 Sweepstakes Puppy (9-12 Months) Dogs
- 3 Sweepstakes Puppy (9-12 Months) Bitches
- 2 Sweepstakes 12-18 Months Bitches

##### Best in Sweepstakes

##### Best of Opposite

*Mrs. Barbara J Sarti-Allen (24)*

##### 11:30pm

- 1 Puppy (9-12 Months) Dogs

##### Winners Dog

- 1 Puppy (6-9 Months) Bitches
- 2 Puppy (9-12 Months) Bitches
- 1 12-18 Months Bitches
- 1 Amateur Owner Handler Bitches
- 4 Bred-By-Exhibitor Bitches
- 1 American Bred Bitches

##### Winners Bitch

- 11 Best of Breed (7-4)
- 2 JS Open Inter Age 12 to 15

**HOTEL/MOTEL POLICY IS SUBJECT TO CHANGE. BE SURE TO CHECK WITH THE ACCOMMODATIONS OF YOUR CHOICE WHEN MAKING RESERVATIONS. PLEASE BE A RESPONSIBLE GUEST. ANY PROBLEMS WILL BE REPORTED TO THE SHOW GIVING CLUBS AND VIOLATORS MAY BE SUBJECT TO A SHOW COMMITTEE HEARING AND AKC SUSPENSION.**

**Hotels & Motels That Will Accept Dogs**

**There are more than 600 hotel rooms that accept pets within 15 minutes of Purina Farms. The largest, Holiday Inn at Six Flags, has 188 rooms with most at ground level. CHECK WITH THE INDIVIDUAL HOTELS FOR PET FEES.**

- Holiday Inn Six Flags**..... 800-782-8108 or 636-938-6661  
 Allenton Six Flags Rd, Eureka MO 63025  
 indoor pool, fun-dome, restaurants  
 10 miles east of Purina Farms  
 Cost of Hotel Room if using the Block is \$99.00  
 (rate available if booked before 2/1/2025)  
 Plus One Time Charge if in Dog Show Block \$15.00
- Comfort Inn** ..... 636-257-4600  
 1320 Thornton, Pacific, MO 63069  
 4 miles east of Purina Farms
- Econo Lodge Inn at Six Flags** ..... 800-251-1962 or 636-938-5348  
 1725 W 5th St., Eureka, MO 63025  
 pool, mini-golf - 10 miles east of Purina Farms
- Wildwood Hotel** ..... 636-733-9100  
 2801 Fountain Place, Wildwood, MO 63040 • [www.thewildwoodhotel.com](http://www.thewildwoodhotel.com)  
 20 minutes (14.6 miles from Purina Farms)  
 Located in the Wildwood Town Center with many nearby shops and restaurants
- Budget Lodging** ..... 636-629-1000  
 866 S I-44 Outer Rd, St Clair MO 63077  
 20 miles west of Purina Farms
- Drury Inn** ..... 636-343-7822  
 I-44 & Bowles Ave, Fenton MO 63026  
 30 miles east of Purina Farms
- Pear Tree Inn** ..... 636-343-8820  
 I-44 & Bowles Ave, Fenton MO 63026  
 30 miles east of Purina Farms

**CAMPGROUNDS THAT WILL ACCEPT DOGS**

- Jellystone Park Campground** ..... 636-938-5925  
 Next to Holiday Inn - 10 miles east of Purina Farms
- KOA Campground** ..... 636-257-3018  
 Old Rt 66 - 10 miles east of Purina Farms
- Robertsville State Park** ..... 636-257-3788  
 Robertsville MO - 10 miles south of Purina Farms

# Gateway Vizsla Club

**Friday, February 28, 2025**

1st Specialty with Junior Showmanship, NOHS, Sweepstakes & Obedience #2025465003

2nd Specialty with Junior Showmanship, NOHS & Sweepstakes #2025465004

4-6 Month Beginner Puppy #2025465002

**Saturday March 1, 2025**

Specialty with Junior Showmanship & NOHS #2025465005



## Officers

Joyce Jackson..... President  
Valerie Smith..... Vice President  
Anne Albin..... Treasurer  
Mary Martin..... Secretary  
410 Elm Crossing Ct, Ballwin, MO 63021-7476 • 636-391-9988 • *versatilemagv24@gmail.com*

## Board of Directors

Scott Martin • Rodney Albin • Marcia Finch

## Show Committee

Marcia Finch..... Specialty Show Chair  
14108 Hamilton Hollow Rd., Sullivan, MO 63080 • 314-304-5507 • *GatewayVizslaShowChair@gmail.com*  
Kristi Shaw..... Obedience Show Chair  
4403 Fox Creek Rd, Pacific, MO 63069 • 314-954-7083 • *stlvizsla@gmail.com*  
Officers of the Club & Members of the Board of Directors

## Committees

Jo Stubbs/Molly Carter..... Chief Ring Stewards  
Val Smith, Mary Martin, Peggy Sieve..... Trophies

# Weimaraner Club of Greater St Louis

**Friday, February 28, 2025**

Specialty with Junior Showmanship, Sweepstakes & Obedience #2025015401

Meet the Breed & New Exhibitor Briefing



## Officers

Robert Hilgenbrink..... President  
Don Weimer..... Vice President  
Barb Shepard..... Treasurer  
Becky Weimer..... Secretary  
14 Lashley Estates Dr, Swansea, IL 62226

## Board of Directors

Sally Watson • Michelle Hunter • Donna Hilgenbrink • Joan Love • Bobbie Wieman

## Show Committee

Becky Weimer..... Show Chair  
14 Lashley Estates Dr, Swansea, IL 62226 • 618-236-1466 • *dbweimer@aol.com*  
Sally Watson..... Obedience Trial Chair  
803 Primrose Ct, O'Fallon, MO 63366 • 636-272-9899  
Michelle Hunter..... Trophy Chair  
Barb Shepard..... Ring Steward

# Dachshund Club of St. Louis, Inc.



**Friday, February 28, 2025**

1st Specialty with Noon Sweepstakes #2025020401  
2nd Specialty and 1pm Jr Showmanship #2025020402

**Officers**

Cassie Myers & Kevin Fritz ..... President  
Victoria Lee ..... Vice President  
Whitney Walker ..... Treasurer  
Lauren Ebel ..... Secretary

**Board of Directors**

Susan Genz • Melissa Fritz • Cindy Scott

**Show Committee**

Lauren Ebel ..... Show Chair  
*1703 Menard Dr., Belleville, IL 62220 lme327@hotmail.com 618-960-7550*

# Great Dane Club of Greater Saint Louis, Inc.

**Friday, February 28, 2025**

1st Specialty with NOHS #2025182701 • 2nd Specialty with Sweepstakes & NOHS #2025182702

**Saturday March 1, 2025**

Specialty with NOHS #2025182703

**Sunday March 2, 2025**

Specialty with NOHS #2025182704



**\*\*\* PLEASE NOTE: NO RINGSIDE CRATING FOR GREAT DANES \*\*\***

**Officers**

Shirley Reinhold ..... President  
Gary Richards ..... Vice President  
Jim Wyatt ..... Treasurer  
Gary Richards ..... Parent Club Representative  
Phillip Shaw ..... Recording Secretary  
Nancy Soucek ..... Corresponding Secretary

*16039 Clarkson Woods Drive, Chesterfield, MO 63017*

**Board of Directors**

Brandy Massey • Joyce Guthrie • Stephanie Bell • Chris Eidy-Rogers

**Show Committees**

Micki Boswell ..... Show Chairperson  
*#12 Silo Lane, Vila Ridge, MO 63089 \* 636-451-3263 \* bosdanesd@charter.net*

Shirley Reinhold ..... Trophy Chairpersons  
Stephanie Bell, Linda Stevens, Brandy Massey & Chris Eidy Rogers ..... Raffle Chairpersons  
Jim Wyatt & Gary Richards ..... Hospitality  
Gary Richards & Jim Wyatt ..... Ring Stewards  
Micki Boswell ..... Catalog Sales

# Heart of America Saint Bernard Club, Inc



**Friday, February 28, 2025**

Afternoon Specialty with Jr Showmanship & Sweepstakes #2025177501

**Saturday March 1, 2025**

Concurrent Specialty with Sweepstakes & NOHS #2025177502

**Officers**

President ..... Monica Costa  
 Vice-President ..... Maureen Zwerk  
 Treasurer ..... Chuck Costa  
 Secretary ..... Chuck Costa

*6013 Illinois Street, Prole, IA 50229*

**Board of Directors**

Nora Frier • Rich Patterson

**Show Committee**

Show Chairperson ..... Monica Costa  
*6013 Illinois Street, Prole, IA 50229 • heartofamericasbc@gmail.com • 515-537-3266*

Chief Ring Steward ..... Marta DeMerath  
 Trophy Chair ..... Monica Costa  
 Hospitality Chair ..... Monica Costa  
 Raffle Co-Chairs ..... Monica Costa & Nora Frier

# The St. Bernard Club of Greater Saint Louis, Inc

These shows are dedicated in memory of Kenn Wilson

**Friday, February 28, 2025**

Morning Specialty with Jr Showmanship & Sweepstakes #2025161501  
**AKC National Owner Handled Series**

**Sunday, March 2, 2025**

Specialty with Jr Showmanship & Sweepstakes #2025161502

**Officers**

President ..... Carole Wilson  
 Vice-President ..... Debbie Schumaker  
 Treasurer ..... Kara Wilson  
 Recording Secretary ..... Debbie Schumaker  
 Corresponding Secretary ..... Cathy Hewitt

*925 W Oakview Dr, Peoria, IL 61615*

**Show Committee**

Carole Wilson • Dr James Trail • Kara Wilson • Nora Frier

Show Chair ..... Carole Wilson  
*PO Box 396, Smithton, IL 62285 • 618-978-8808 • Kryskara1@aol.com*

Chief Ring Steward ..... Marta DeMerath  
 Grounds ..... Kara Wilson  
 Raffle ..... Nora Frier  
 Trophies ..... Kara Wilson

**AFTER SHOW DINNER**

**THE SBCGSL WILL HAVE A DINNER (TIME TO BE ANNOUNCED) AT THE HAY MARKET RESTAURANT AT THE HOLIDAY INN. WE HAVE A VERY GOOD TIME WITH LOTS OF TALK AND LAUGHS. WE ORDER OFF OF THE MENU AND WE ARE LOCATED IN THE DINING ROOM.**



# Heart of America Scottish Terrier Club, Inc



**Friday, February 28, 2025**

Specialty Show with Sweepstakes #2025117501  
Specialty Show #2025117502

## **Officers for 3/2024 to 3/2025**

Julie Hill ..... President  
Brandon Mann ..... Vice President  
Janet Bartholomew/ Brad Pence-Mann ..... Treasurer  
Theresa Stewart ..... Secretary  
Susan Jacobsen ..... Corresponding Secretary

7088 Irish Ave, Cottage Grove, MN 55016

## **Board of Directors for 3/2024 to 3/2025**

Christine O'Brien • Jackie Forkel • Jeff Jones

## **Show Committee**

Thomas Pinckney DDS ..... Show Chair  
6100 SW McKinley Ave Des Moines, IA 50321-1655 • 525-285-1817  
*twpinckney515@gmail.com*

And All The Officers and Members of the Board of Directors

## **Committees**

Susan Jacobsen ..... Trophy Chair  
Christine O'Brien ..... Hospitality Chair

# Land of Lincoln Chihuahua Club of Illinois

Specialty is dedicated to the memory of Sylvia Farkas



**Friday, February 28, 2025**

1st Specialty with Junior Showmanship & Sweepstakes #2025438901

2nd Specialty with Junior Showmanship & Sweepstakes #2025438902

## Officers

President ..... Steve Hayden  
Vice President ..... Jessica Simon  
Treasurer ..... Richard Lashbrook  
Corresponding Secretary ..... Richard Lashbrook  
2029 Monteford Ct, Springfield, IL 62704 • 217-622-6687

## Board of Directors

Jean Pratt [2025] • Gina Dattilo [2024] • Christy Collins [2026]

## Show Committee

Mr. Steve Hayden ..... Show Chair  
2029 Monteford Ct, Springfield, IL 62704-4172 • 217-725-3647 • [hybrk1@comcast.net](mailto:hybrk1@comcast.net)  
And All The Officers and Members of the Board of Directors

## Committees

Steve Hayden ..... Chief Ring Steward  
Steve Hayden & Richard Lashbrook ..... Hospitality  
Gina Schag, Christy Collins & Gina Dattilo ..... Trophies  
All LLCC Members ..... Clean-up  
Gina Schag, Steve Hayden, Richard Lashbrook ..... Set-up  
Barb Calhoun & Jean Pratt ..... Silent Auction  
Gina Schag ..... Membership

# Schipperke Club of Greater St Louis



Friday, February 28, 2025

Conformation with Junior Showmanship, Sweepstakes & NOHS #2025121801

## Officers

Melissa Grueninger ..... President  
Dr. Mary Kraus ..... Vice President  
Diane Ramsey ..... Treasurer  
Lynne Hartke ..... Secretary  
2751 Queen Avenue, St. Louis, MO 63143 • hartkelk@gmail.com

## Board of Directors

Melodi Hendriksen • Sheryl Meyer • Brian Carbone

## Show Committee

Dr. Mary Kraus ..... Show Chairman  
S38W 26445 Riverview Dr., Waukesha, WI 53189 • 816-519-4195 • marykraus.sca@gmail.com  
And All The Officers and Members of the Board of Directors

## Committees

Melissa Grueninger ..... Trophies, Advertising, Hospitality  
Dr. Mary Kraus ..... Building/ Grounds  
Wendy Culbertson ..... Chief Ring Steward

## Ringside Mentoring Available

## ATTENTION EXHIBITORS – SHOW SITE

- NO CONES PERMITTED OUTSIDE ON THE SHOW GROUNDS.
- **Ring Side crating in designated areas only**
- **Crates may not be placed ringside until immediately before judging of the designated breed and must be removed from ringside immediately following judging of that designated breed. \*\*\*NO ringside crating for Great Danes.** If it is necessary to rescue a dog from a parked car on the show grounds, the clubs will not be responsible or liable for any damage to the car involved.
- No un-entered dogs.
- No catalogs will be given away.
- No advertising or flyers may be placed without permission of the show-giving clubs and Purina Farms.
- **The Combined Specialty Association of Greater St Louis does not agree to arbitrate claims as set forth on the Official AKC entry form for these events.**
- **No Flexi-Leads**
- **Only one parking space per vehicle**
- **NO day parking on Level A, B, C or D - RV parking lot or on Overflow parking lot.** All vehicles must leave their headlights on while unloading. NO VEHICLES MAY BE PARKED NEXT TO ANY BUILDING OR IN ANY ROADWAY. VIOLATORS WILL BE TOWED AT OWNER'S EXPENSE.
- **NO SMOKING (including electronic cigarettes) IN ANY OF PURINA FARMS BUILDINGS.**
- **NO EX-PENS** allowed on the grass anywhere on the level of the Show Grounds.
- **ACCESS** - The front gate is manned by a security guard from 6a.m. – 6p.m. to allow access to the property. Gates may be closed outside of these hours, but access to and from the property is still possible by pushing a call button at the gate or calling security at 636-221-1428. The exit gate automatically opens to allow guests to leave. Please note that quiet hours on the property are 11p.m. – 6a.m. Exhibitors with RVs coming in or leaving during that time should be respectful of other campers and be as quiet/non-disruptive as possible. **PARKING:** Exhibitor and visitor parking will be located on parking lots below the Show Grounds, at the Visitor's Center, and in front of the Purina Event Center. Vehicles are limited to one parking space. No Ex-Pens or Crates allowed on blacktop, but are allowed on grass areas. No cones allowed in parking areas. NO VEHICLES MAY BE PARKED NEXT TO ANY BUILDING OR IN ANY ROADWAY. VIOLATORS WILL BE TOWED AT OWNER'S EXPENSE.
- **Overnight RV** parking is by reservation only. Violators will be asked to move or be towed at owner's expense. Refer to information in the RV Parking Reservation Form.
- **Day Parking** in the RV parking area is prohibited. Violators will be asked to move or be towed at owner's expense.
- **Day Only Parking** is limited to the designated parking lots.
- **Handicapped** parking is available in areas marked.
- **All dogs** must be on-leash at Purina Farms at all times (except when crated or as required to be judged).
- **Exhibitors** should follow their veterinarian's recommendation to assure their dogs are free of internal and external parasites, any communicable diseases, and have appropriate vaccinations.
- **Rabies Vaccination** Certificate - Missouri requires you to have proof of current rabies vaccination with you. Tags are not accepted.
- **The Clubs, Purina, the Superintendent** and their agents, employees, etc., assume no responsibility or liability for any loss, damage, or injury sustained by exhibitors or spectators, their family, or to any of their dogs or property, and further assume no responsibility for injury to children.

## EXHIBITORS & GUESTS

**No one is permitted anywhere that is marked "Employees Only" and/or "No Admittance."** These are separate divisions of Purina and are not part of the show grounds. **No person or dogs are allowed on the second floor of the Purina Event Center. "If your child is in a stroller, keep a respectful distance from dogs, particularly dogs whose heads are at the same level as your child. Be very careful when near dogs so that you don't run over tails or feet or bump into them. Be sure your child does not reach out to touch a dog without owner's permission.**