

## Premium List

### Ozark Mountain Fall Classic 2025



Best of the BEST  
Owner-Handled Spectacular  
*Must be entered in OH all 4 Days*  
*(not necessarily shown)*  
Sunday, November 9, 2025  
\$750 Total Prize Money  
See Page 8 for Rules



**Thursday, November 6, 2025**  
**Friday, November 7, 2025**

**Saturday, November 8, 2025**  
**Sunday, November 9, 2025**



**Three Trails Cardigan Welsh Corgi Club of Kansas City**  
**Friday, November 7, 2025**  
**Saturday, November 8, 2025**

**Ozark Empire Fairgrounds & Events Center**

3001 N Grant Ave, Springfield, MO 65803

Show Hours: 6 am to 8 pm

ALL SHOWS WILL BE HELD INDOORS - Unbenched

All One Level • Air Conditioned/Heated • Concrete Floors



**Premium List**  
**Ozark Mountain Fall Classic**  
**AKC National Owner-Handled Series Each Day**

**North Arkansas Kennel Club**

*(Licensed by the American Kennel Club)*

**Thursday, November 6, 2025**

All Breed show with Junior Showmanship #2025246416<sup>1</sup>

**Friday, November 7, 2025**

All Breed show with Junior Showmanship #2025246417<sup>1</sup>

Specialty with Sweepstakes: Three Trails Cardigan Welsh Corgi Club of Kansas City #2025606901<sup>2</sup>

**Ozarks Kennel Club, Inc**

*(Member of the American Kennel Club)*

**Saturday, November 8, 2025**

All Breed show with Junior Showmanship #2025018803<sup>1</sup>

4-6 Month Beginner Puppy Competition #2025018804

Specialty with Sweepstakes: Three Trails Cardigan Welsh Corgi Club of Kansas City #2025606902<sup>2</sup>

**Sunday, November 9, 2025**

All Breed show with Junior Showmanship #2025018805<sup>1</sup>

4-6 Month Beginner Puppy Competition #2025018806

<sup>1</sup>Entries limited to 1,500

<sup>2</sup>Entries limited to 100

***\$1.00 from each entry of the Ozark Mountain Fall Classic  
is being donated to the 4-State Search & Rescue.***



**Foy Trent Dog Shows LLC**

AKC Annually Licensed Superintendents:  
James Davis • Ingrid Greig • Caleb O'Brien  
Robert Shaffer • Foy Trent • Susan W. Trent

P.O. Box C, Sturgeon, MO 65284  
(573) 687-2101 • [www.foytrentdogshows.com](http://www.foytrentdogshows.com)



**AMERICAN  
KENNEL CLUB®**

**CERTIFICATION** Permission has been granted by the American Kennel Club for the holding of this event under the American Kennel Club rules and regulations.

**SHEILA H. GOFFE, Executive Secretary**

**ENTRIES OPEN Friday, September 19, 2025 at 12 NOON, Central Time.**  
**Entries that are received prior to this date and time will be returned.**

**ENTRIES CLOSE NOON, Central Time, Wednesday, October 22, 2025**  
or when the numerical limit has been reached (where indicated), if reached prior to this date at Foy Trent Dog Shows in Sturgeon, MO after which time entries cannot be accepted, cancelled, altered or substituted except as provided for in Chapter 11, Section 6 of the Dog Show Rules

**When a dog is entered in more than one class under an event number, the highest priced class is considered the first entry. Separate fee, each dog, each event.**

**• Please put Breed and Name of Show on Check or Money Order •**

**MAIL ENTRIES WITH FEES MADE OUT TO:**  
**Foy Trent Dog Shows, PO Box C, Sturgeon, MO 65284**  
Entries are also accepted online at [www.foytrentdogshows.com](http://www.foytrentdogshows.com)  
**Office Hours: Monday-Friday, 8:00am to 4:30pm Central**

**Entry Fees**

See Notice to Exhibitors for AKC Fees

**North Arkansas Kennel Club & Ozarks Kennel Club**

**And all specialty clubs unless otherwise listed**

First entry of each dog .....	\$32.00
Additional entry of same dog, unless otherwise specified.....	\$25.00
Puppy Class (6-9 month & 9-12 month) .....	\$23.00
Amateur Owner Handler and Bred-by-Exhibitor Class .....	\$23.00
Junior Showmanship Competition Only .....	\$12.00
Junior Showmanship Competition, as an additional entry .....	Free
4-6 Month Beginner Puppy Competition .....	\$15.00

**Three Trails Cardigan Welsh Corgi Club of Kansas City**

Cardigan Welsh Corgi Specialty First entry of each dog .....	\$35.00
Additional entry of same dog, unless otherwise specified.....	\$28.00
Cardigan Welsh Corgi Puppy Sweepstakes ( <i>must be entered in a regular class</i> ) .....	\$25.00
Cardigan Welsh Corgi Veteran Sweepstakes ( <i>need not be entered in a regular class</i> ) .....	\$20.00

**Stewarding by Best In Stewards**

**Don't Miss Out On A Great Raffle !!!!!**

**Friday & Saturday  
November 7 & 8, 2025**

**Drawing after Group Judging on Saturday.**

**The Ozark Mountain Fall Classic Cluster Committee**

**Ozarks Kennel Club, Inc**

Linda Williams, Frank Lavoie, Sandy Girth

**North Arkansas Kennel Club, Inc**

Jerry O'Dell, Barb Allen, Sherry Gibbany

**Show Photographer**

Melia Photography

7613 S 72nd Ave, La Vista, NE 68128

402-331-5071

**Show Veterinarian (on call each day)**

**Emergency Veterinary Clinic of**

**Southwest Missouri Inc**

400 S Glenstone Ave, Springfield, MO 65802

**417-890-1600**

***Directions: See Map on page 18 for directions to clinic***

*Exhibitors should follow their veterinarian's recommendation to assure their dogs are free of internal and external parasites, any communicable diseases and have appropriate vaccinations.*

## Ribbon/Rosette Prizes

Regular Classes		Non-Regular Classes	
First Prize	Blue	First Prize	Rose
Second Prize	Red	Second Prize	Brown
Third Prize	Yellow	Third Prize	Light Green
Fourth Prize	White	Fourth Prize	Gray
Winners	Purple	Best Junior Handler	Rose/Green
Reserve Winners	Purple/White	Reserve Best Junior	Rose/Gray
Best of Winners	Blue/White	Best of Breed	Orange
Best of Breed/Variety	Purple/Gold	Best of Opposite	
Best of Opposite Sex to		Sex to Best of Breed	Lavender
Best of Breed/Variety	Red/White	Best in Miscellaneous	Pink/Green
Select Dog/Bitch	Light Blue/White		
Variety Groups			
First Prize	Blue	Best of Breed/Variety NOHS	Maroon
Second Prize	Red	NOHS Group 1	Neon Pink
Third Prize	Yellow	NOHS Group 2	Neon Green
Fourth Prize	White	NOHS Group 3	Teal
Best in Show	Red, White/Blue	NOHS Group 4	Cream
Reserve Best in Show	Hot Pink/Black	Best in Show NOHS	Turquoise
		Reserve BIS NOHS	Light Green

## Classifications

### Regular Classes for Dogs & Bitches

Puppy	Amateur Owner Handler
6 months & under 9 months	Bred-by-Exhibitor Puppy
9 months & under 12 months	Bred-by-Exhibitor Adult
Twelve to Eighteen Months	American Breed
Novice	Open
	WINNERS

### Best of Breed (Variety) Competition

*The above classifications are provided for all breeds (and varieties). Additional divisions, (i.e., age, color, or weight) are in the breed list and must be indicated on the entry.*

## Open Class Divisions

**Labradors:** Black; Chocolate; Yellow

**Dachshunds (all three varieties):** *Miniature* - 11 lbs. & under; 12 months old or over; *Standard* - over 11 lbs.; 11 lbs. & under if less than 12 months old

**Portuguese Podengo Pequenos:** Smooth Coat; Wire Coat

**Boxers:** Brindle; Fawn

**Doberman Pinschers:** Black, AOAC

**Giant Schnauzers:** Black; Pepper and Salt

**Great Danes:** Black; Blue; Brindle; Fawn; Harlequin; Mantle; Merle

**Saint Bernards:** Longhaired; Shorthaired

**Boston Terriers:** Under 15 lbs.; 15 lbs. & under 20 lbs.; 20 lbs. & not to exceed 25 lbs.

**Chinese Shar-Pei:** Brushcoat; Horsecat

**Xoloitzcuintli:** Standard; Miniature; Toy

**Australian Shepherds:** Black; Blue Merle; Red; Red Merle

**Collies (Rough):** Blue Merle; Sable & White; Tri-Color; White

**Shetland Sheepdogs:** Sable & White; AOAC

## **Miscellaneous Breeds**

*There will be Puppy, Bred-by-Exhibitor, & Open Classes for each of the Miscellaneous Breeds in each sex.  
Puppy and Bred-by-Exhibitor classes will be divided by age if all-breed classes are divided.*

Winners from these classes will compete for Best of Breed and Best of Opposite Sex to Best of Breed in each breed. Each Miscellaneous Best of Breed winner shall be eligible to compete for Best in Miscellaneous Class. All entries for Best in Miscellaneous Class shall be made after judging of the individual Miscellaneous breed classes. In the event that the owner of a dog designated Best of Breed shall not exhibit the dog in the Best of Miscellaneous Class Competition, no other dog of the same breed shall be allowed to compete. There shall be no further competition for dogs entered in the Miscellaneous Class. Ribbons shall conform to Chapter 5, Section 2 of AKC Rules.

## ***AKC National Owner-Handled Series***

*Please See [www.AKC.org](http://www.AKC.org)  
For Eligibility & Requirements*

*See page 35 for Three Trails Cardigan Welsh Corgi Club Specialty information.*

## 4-6 Month Beginner Puppy Competition

### Section 1- Classifications

The Four-to-Six Month Puppy competition shall be for dogs that are four months of age and over but under six months on the day of the event. Classes will be offered for breeds and varieties and divided into Groups as described in Chapter 3, Section 1 of the Rules Applying to Dog Shows and the Miscellaneous Class breeds as listed in Chapter 3, Section 23. The Miscellaneous class competition will be the equivalent of Group competition and the winner will be eligible to compete in Best Four-to-Six Month Puppy in Show. The FSS competition will be the equivalent of Group competition and the winner will be eligible to compete in Best Four-to-Six Month Puppy in Show.

### Section 2 – Entry and Eligibility

- Entry and eligibility requirements include:
- The Four-to-Six Month Puppy event may be offered at licensed, or member dog shows or conformation B matches at the option of the show giving club.
- Four-to-Six Month Puppy Competition must be listed in the premium list, entry form and judging schedule, if offered.
- Closing date and time for this competition may be listed as any date and time prior to the event including the same day as the event and must be listed in the premium list, entry form and judging schedule.
- AKC registration number or an AKC litter number will be required for entries of an AKC recognized breed as listed in Chapter 3, Section 1 of the Rules Applying to Dog Shows.
- A foreign-born dog may enter this class if they are registered in the country of origin.
- FSS number or FSS registered litter number will be required for Miscellaneous and FSS breed entries.
- All entrants are to be vaccinated (including rabies) in accordance with their veterinarian's protocol.
- Professional handlers, members of their household and current assistants to professional handlers may personally exhibit a dog they own as "Exhibition Only" in the Four-to-Six Month (Beginner Puppy) Competition. "Exhibition Only" entries are not eligible to earn awards in this competition.
- Dogs that are owned or co-owned by a professional handler, members of their household, or current assistants to professional handlers may compete for awards in this competition but must be handled by a non-professional handler. Professional handlers are defined as any person who belongs or has belonged to a professional handlers' organization, distributed rate cards, or otherwise advertised or represented themselves as handling dogs for pay within the last five years. Dogs may not be exhibited by current assistants and household members of a professional handler.
- Minors (under 18) with amateur status who reside with professional handlers and current assistants to professional handlers that are eligible to compete in Junior Showmanship (meet age and amateur status requirements) may personally exhibit dogs in the Four-to-Six Month (Beginner Puppy) Competition.
- Exhibition Only entries may not be changed to be eligible to compete for awards after the close of entries.

7/31/24

## **Pee Wee Competition**

### **Saturday & Sunday**

#### **ENTRY FEE: \$20**

**Limited to 10 Entries each day**

**Entries Accepted Day of Event**

Consult Judging Program for meeting place & time

The Pee Wee Special Attraction is a pre-Junior Showmanship class. The Pee Wee class is geared toward children 5 to under 9 years of age at all shows offering Pee Wee.

Each Pee Wee unit consists of the child, his/her parent/guardian/responsible adult, and the dog. Only one Pee Wee unit is in the ring at a time. This is not a competitive class, but rather a fun, learning experience for the child and the adult.

- A dog must be at least four months of age to enter the Pee Wee class.
- Bitches in season will not be allowed to participate. If pre-entered, a dog may be substituted that meets the eligibility requirements as specified by the club.
- All dogs entered must have the proper lead and collar.
- A responsible adult must be present with the child both inside and outside the ring. The adult is to maintain control of the dog outside of the ring.
- At an All-Breed event, all AKC fully recognized and Miscellaneous Class breeds are allowed to enter, including dogs with a PAL listing.
- In addition to an entry, a release must be signed by the child's parent or legal guardian. Release forms will be available at the show.

The safety of both the dogs and Juniors inside and outside the ring is a primary concern. Outside of the ring, the dog is to be controlled by the adult accompanying the child. An additional lead, provided by the Club, will be at the Judge's table. At the Judge's discretion based upon the size of the child and the dog, for safety purposes the adult may be asked to attach a second lead to the dog so both child and adult will walk the dog together.

Although the word "judge" will be used, this is designed to be a learning and mentoring experience—no Junior will be "judged" but rather will be mentored with the age appropriate amount of information to help prepare them for what they will be expected to know about AKC regular Junior Showmanship once they reach 9 years of age. The children will be mentored one child, their adult, and dog in the ring at a time. Each child will receive a participation Rosette and each dog will receive a squeaky toy to commemorate the experience!

The Judge should explain the process of showing the dog to the Junior and the responsible adult in the ring including breed specific presentation. Depending on the size of the dog and the child, the adult may be asked to lift a table breed on or off the table, or the Club may mandate that the adult should do it regardless. Neither the youngster nor the adult should be asked to show the bite.

Entries close at the Superintendent's Office, Noon, June 8, 2022 or when the numerical limit is reached. On-site entries will be accepted on Friday and Saturday until 11:00 am at the Trophy Table or when the numerical limit is reached.



# JUNIOR SHOWMANSHIP COMPETITION

Novice Junior 9 & under 12 yrs • Open Junior 9 & under 12 yrs

Novice Intermediate 12 & under 15 yrs • Open Intermediate 12 & under 15 yrs

Novice Senior 15 & under 18 yrs • Open Senior 15 & under 18 yrs • Master Class

**Novice Class** - shall be for boys and girls who are at least 9 years old and under 18 years old on the day of the show and who at the time entries close have not won three (3) first place awards, with competition present, in a Novice Class. A first place in Novice without competition leading to a Best Junior award with competition would count as one win towards moving to Open at a licensed or member show. Junior Handlers who win a third Novice Class with competition, if a win in Novice leads to a Best Junior with competition present it will count as one win towards moving to Open, after the closing of entries for a show are required to transfer their entry from the Novice Class to the Open Class by notifying the Superintendent or Show Secretary prior to the judging of the class at the show.

**Open Class** - shall be for boys and girls who are at least 9 years old and under 18 years old on the day of the show and who have won three (3) first place awards in a Novice Class or if a win in Novice leads to a Best Junior with competition present it will count as one win towards moving to Open in a licensed or member show.

**Master Class** - will be for boys & girls who are at least 9 years old and under 18 years on the day of the show, and who have won 10 Best Junior wins with competition. The calendar for this class will be consistent with the eligibility dates for the AKC National Championship. All Juniors meeting the criteria for this class are required to enter the Master Class and must change their entry the day of the show if entries have already closed. Once the eligibility time frame for that year has passed all participants return to the Open Class to complete for the following year.

No entry may be changed or cancelled unless notice of the change or cancellation is received in writing by the Superintendent or Show Secretary named in the premium list to receive entries, prior to the closing date and hour for entries, except that a correction may be made from one age division to another, as well as, move from Master to Open or Open to Novice if a win has been disallowed or the Junior miscalculated number of placements, provided this transfer is made by the Superintendent or Show Secretary prior to the judging of the class at the show.

**NOTICE: Junior Handlers must include their AKC JUNIOR HANDLER NUMBER on each entry.**

You may obtain your junior identification number by calling the AKC, Judges Education Department (919) 233-9767.

## RAMP OPTIONAL BREEDS

At the discretion of the judge through all levels of competition including group and Best in Show judging.

AMERICAN WATER SPANIEL	WHIPPET	ENTLEBUCHER MOUNTAIN DOG
BOYKIN SPANIEL	GERMAN PINSCHER	FINNISH LAPPHUND
ENGLISH SPRINGER SPANIEL	PORTUGUESE WATER DOG	ICELANDIC SHEEPDOG
(ESS ramp only eff 1/1/26)	STANDARD SCHNAUZER	MUDI (or Table)
FIELD SPANIEL	AMERICANSTAFFORDSHIRETERRIER	NORWEGIAN BUKHUND
NS DUCK TOLLING RETRIEVER	IRISH TERRIER	POLISH LOWLAND SHEEPDOG
WELSH SPRINGER SPANIEL	MINATURE BULL TERRIER (Ground/Table)	PULLI (or Table)
BASENJI (Ramp eff. 10/1/25)	SOFT COATED WHEATEN TERRIER	SPANISH WATER DOG
GRAND BASSET GRIFFON VENDEEN	STAFFORDSHIRE BULL TERRIER	BASSET FAUVE DE BRETAGNE (Misc.)
NORWEGIAN ELKHOUND (eff 1/1/26)	FINNISH SPITZ	NORRBOTTENSPET (Misc.)
	AUSTRALIAN CATTLE DOG	

## BREEDS THAT MUST BE JUDGED ON RAMP

Applies to all conformation competition associated with AKC conformation dog shows or at any event at which an AKC conformation title may be earned.

CLUMBER SPANIEL	BASSET HOUND	CHOW CHOW
ENGLISH SPRINGER SPANIEL (eff 1/1/26)	CIRNECO DELL'ETNA	KEESHONDEN
LAGOTTO ROMAGNOLO	KERRY BLUE TERRIER	SPANISH WATER DOG
SUSSEX SPANIEL	BULLDOGS	
	CHINESE SHAR-PEI	

*NOTE: Ramps can be used in emergency situations to judge any breed.*

*Please Check [www.AKC.org](http://www.AKC.org) for updates to this list.*

*Rev 08/26/25*



**Ozark Mountain Fall Classic  
Owner-Handled Best of the BEST Competition  
Special Attraction**

**Sunday, November 9, 2025**

1. **All OH Entries Must Enter the 4-day Classic**  
November 6–9, 2025 *(not necessarily shown)*
2. All Handlers Must Be NOHS Qualified.  
*(visit [www. AKC.org](http://www.AKC.org) for eligibility and rules)*
3. Closing Date will Be the Same as the Show, October 22, 2025 and all conditions the same.
4. All entries awarded OHBIS or Reserve OHBIS on November 6, 7, 8 & 9 will compete on Sunday, November 9, 2025 for the Best of the BEST.
5. Best of the Best Owner-Handled for the Classic will be awarded \$500.00 and the Reserve Best Owner-Handled will be awarded \$250.00 in cash.
6. Best of The Best Judge to be announced.



# AKC® Code of Sportsmanship and Civility

Preface: The tradition of competitive purebred dog events predates 1884—the year the American Kennel Club (AKC®) was founded. Those involved in these sports share core values, including a strong commitment to sportsmanship and a welcoming, respectful culture that embraces the diverse community united by a love of dogs.

These values are evident across all aspects of the sport: conformation, performance, companion, and family dog activities. Many believe that the enduring principles of sportsmanship and civility are key reasons the sport has thrived for over 140 years.

Recognizing that periodically reaffirming our shared values strengthens our community, the revised code will be shared widely to highlight the foundational values and principles that define the sport.

- Sportspeople always place the welfare of their dog above all else.
- Sportspeople prioritize the long-term health and preservation of their breed, making decisions that reflect a deep commitment to responsible breeding and ownership.
- Sportspeople respect the history, traditions and integrity of the sport of purebred dogs.
- Sportspeople conduct themselves in a manner that reflects positively on the sport, the American Kennel Club, and themselves.
- Sportspeople appreciate, encourage and support all who associate with and participate in the sports by fostering an environment where respect, equity, inclusion, and courtesy are foundational.
- Sportspeople understand, uphold and abide by all AKC bylaws, rules, regulations and policies.
- Sportspeople contribute to a positive atmosphere at events by avoiding negative gossip, disparagement, or unsportsmanlike behavior.
- Sportspeople extend their values of civility, fairness, and respect to all digital and social media platforms.
- Sportspeople actively support the education and mentorship of newcomers, helping them learn the rules, values, and traditions of the sport in a respectful way.
- Sportspeople recognize that they are role models in the sport, and strive to lead by example through humility, kindness, and ethical conduct.
- Sportspeople treat fellow exhibitors, judges, officials, volunteers, spectators, and AKC staff with dignity and respect, regardless of experience, background, or differences in opinion.
- Sportspeople are committed to fair play, honesty, courtesy, and competition, approaching both winning and losing with grace.
- Sportspeople understand that strong competition and civility can—and should—coexist. They appreciate the quality of their competitors, and the effort put forth by others.
- Sportspeople uphold their responsibilities to the sport of purebred dogs and refuse to let personal gain or self-interest influence their decisions or behavior.
- The sportsperson judges only on the merits of the dogs and considers no other factors.
- The sportsperson judge or exhibitor accepts constructive criticism.
- The sportsperson exhibitor declines to enter or exhibit under a judge where it might reasonably appear that the judge's placements could be based on something other than the merits of the dogs.
- The sportsperson exhibitor refuses to compromise the impartiality of a judge.
- Sportspeople are willing to share honest and open appraisals of both the strengths and weaknesses of their breeding stock.
- Sportspeople decline to exploit any positions of authority or recognition for personal advantage.
- Sportspeople appreciate those that have gone before them and realize they are responsible for maintaining and enhancing the sport for future generations.



**Everything We Do,  
We Do for Dogs.**

7/2025

## Judges

Mr. Larry C Abbott (20217)	1060 Pecan Dr, Fairview, TX 75069
Vicki L Abbott (6644)	1060 Pecan Dr, Fairview, TX 75069
Mrs. Anna May Fleischli Brown (6300)	1709 W Vernon Ave, Springfield, IL 62704
Dana P Cline (7276)	801 Branch Rd, Albany, GA 31705
Kathy Davis	435 N. Valley Drive, Apache Junction, AZ 85120
Traci Genaw	514 S. 113th Street, Mesa, AZ 85208
Jason Hoke (92952)	314 S Midvale Blvd, Madison, WI 53705
Cynthia Hutt (95461)	PO Box 85, Rush, CO 80833
Lynn Jech (16178)	505 Southview Drive, Richmond, MO 64085
Mr. David J Kirkland (6340)	387 Holly Brook Rd, Sanford, NC 27330
Vivian Andre Moran (93751)	400 Hickory Ridge Rd, Waddy, KY 40076
Mr. Vincent J Savioli (93351)	321 Forbush St, Boonton, NJ 07005
Mr. Robert J Shreve (2759)	7979 W 28th St, Greeley, CO 80634
Patricia V Trotter (6420)	PO Box 222036, Carmel, CA 93922
Mrs. Carole A Wilson (5960)	PO Box 396, Smithton, IL 62285

**Please Note:** (\*) appearing after a judge's name/assignment denotes provisional status for that assignment at the time of judge panel processing.

## Judge Assignments (Ozark Mountain Fall Classic)

	Thursday	Friday	Saturday	Sunday
<b>Best In Show</b>	<b>J Hoke</b>	<b>L Abbott</b>	<b>D Cline</b>	<b>P Trotter</b>
<b>NOHS Best In Show</b>	<b>D Kirkland</b>	<b>V Abbott</b>	<b>J Hoke</b>	<b>C Hutt</b>
<b>Sporting Group</b>	<b>P Trotter</b>	<b>V Abbott</b>	<b>L Abbott</b>	<b>R Shreve</b>
<b>NOHS Sporting Group</b>	<b>J Hoke</b>	<b>R Shreve</b>	<b>C Hutt</b>	<b>L Abbott</b>
Barbet	J Hoke	V Abbott	L Abbott	R Shreve
Bracco Italiano	J Hoke	V Abbott	L Abbott	R Shreve
Brittany	J Hoke	V Abbott	L Abbott	R Shreve
Lagotto Romagnolo	J Hoke(*)	V Abbott	L Abbott	R Shreve
Nederlandse Kooikerhondje	J Hoke(*)	V Abbott	L Abbott	R Shreve
Pointer	J Hoke	V Abbott	L Abbott	R Shreve
German Shorthaired Pointer	J Hoke	V Abbott	L Abbott	R Shreve
German Wirehaired Pointer	J Hoke(*)	V Abbott	L Abbott	R Shreve
Chesapeake Bay Retriever	J Hoke	V Abbott	L Abbott	R Shreve
Curly-Coated Retriever	J Hoke(*)	V Abbott	L Abbott	R Shreve
Flat-Coated Retriever	J Hoke(*)	V Abbott	L Abbott	R Shreve
Golden Retriever	J Hoke	V Abbott	L Abbott	R Shreve
Labrador Retriever	J Hoke	V Abbott	L Abbott	R Shreve
Nova Scotia Duck Tolling Retriever	J Hoke(*)	V Abbott	L Abbott	R Shreve
English Setter	J Hoke	V Abbott	L Abbott	R Shreve
Gordon Setter	J Hoke	V Abbott	L Abbott	R Shreve
Irish Setter	J Hoke	V Abbott	L Abbott	R Shreve
Irish Red and White Setter	J Hoke(*)	V Abbott	L Abbott	R Shreve
American Water Spaniel	J Hoke	V Abbott	L Abbott	R Shreve
Boykin Spaniel	J Hoke	V Abbott	L Abbott	R Shreve
Clumber Spaniel	J Hoke	V Abbott	L Abbott	R Shreve
Cocker Spaniel Black	J Hoke	V Abbott	L Abbott	R Shreve
Cocker Spaniel ASCOB	J Hoke	V Abbott	L Abbott	R Shreve
Cocker Spaniel Parti	J Hoke	V Abbott	L Abbott	R Shreve
English Cocker Spaniel	J Hoke	V Abbott	L Abbott	R Shreve

\* See Page 5 for Open Class Divisions.

	Thursday	Friday	Saturday	Sunday
English Springer Spaniel	J Hoke	V Abbott	L Abbott	R Shreve
Field Spaniel	J Hoke	V Abbott	L Abbott	R Shreve
Irish Water Spaniel	J Hoke	V Abbott	L Abbott	R Shreve
Sussex Spaniel	J Hoke(*)	V Abbott	L Abbott	R Shreve
Welsh Springer Spaniel	J Hoke(*)	V Abbott	L Abbott	R Shreve
Spinone Italiano	J Hoke(*)	V Abbott	L Abbott	R Shreve
Vizsla	J Hoke	V Abbott	L Abbott	R Shreve
Weimaraner	J Hoke(*)	V Abbott	L Abbott	R Shreve
Wirehaired Pointing Griffon	J Hoke(*)	V Abbott	L Abbott	R Shreve
Wirehaired Vizsla	J Hoke(*)	V Abbott	L Abbott	R Shreve
<b>Hound Group</b>	<b>V Abbott</b>	<b>J Hoke</b>	<b>P Trotter</b>	<b>D Kirkland</b>
<b>NOHS Hound Group</b>	<b>D Cline</b>	<b>D Kirkland</b>	<b>R Shreve</b>	<b>J Hoke</b>
Afghan Hound	V Abbott	J Hoke	P Trotter	D Kirkland
American English Coonhound	V Abbott	J Hoke	P Trotter	D Kirkland
American Foxhound	V Abbott	J Hoke	P Trotter	D Kirkland
Azawakh	V Abbott	J Hoke	P Trotter	D Kirkland
Basenji	V Abbott	J Hoke	P Trotter	D Kirkland
Basset Hound	V Abbott	J Hoke	P Trotter	D Kirkland
Beagle (13 in. and under)	V Abbott	J Hoke	P Trotter	D Kirkland
Beagle (over 13 in.)	V Abbott	J Hoke	P Trotter	D Kirkland
Black and Tan Coonhound	V Abbott	J Hoke	P Trotter	D Kirkland
Bloodhound	V Abbott	J Hoke	P Trotter	D Kirkland
Bluetick Coonhound	V Abbott	J Hoke	P Trotter	D Kirkland
Borzoi	V Abbott	J Hoke	P Trotter	D Kirkland
Cirneco dell'Etna	V Abbott	J Hoke	P Trotter	D Kirkland
Dachshund (Longhaired)	V Abbott	J Hoke	D Cline	D Kirkland
Dachshund (Smooth)	V Abbott	J Hoke	D Cline	D Kirkland
Dachshund (Wirehaired)	V Abbott	J Hoke	D Cline	D Kirkland
English Foxhound	V Abbott	J Hoke	P Trotter	D Kirkland
Grand Basset Griffon Vendeen	V Abbott	J Hoke	P Trotter	D Kirkland
Greyhound	V Abbott	J Hoke	P Trotter	D Kirkland
Harrier	V Abbott	J Hoke	P Trotter	D Kirkland
Ibizan Hound	V Abbott	J Hoke	P Trotter	D Kirkland
Irish Wolfhound	V Abbott	J Hoke	P Trotter	D Kirkland
Norwegian Elkhound	V Abbott	J Hoke	P Trotter	D Kirkland
Otterhound	V Abbott	J Hoke	P Trotter	D Kirkland
Petit Basset Griffon Vendeen	V Abbott	J Hoke	P Trotter	D Kirkland
Pharaoh Hound	V Abbott	J Hoke	P Trotter	D Kirkland
Plott Hound	V Abbott	J Hoke	P Trotter	D Kirkland
Portuguese Podengo Pequeno	V Abbott	J Hoke	P Trotter	D Kirkland
Redbone Coonhound	V Abbott	J Hoke	P Trotter	D Kirkland
Rhodesian Ridgeback	V Abbott	J Hoke	P Trotter	D Kirkland
Saluki	V Abbott	J Hoke	P Trotter	D Kirkland
Scottish Deerhound	V Abbott	J Hoke	P Trotter	D Kirkland
Sloughi	V Abbott	J Hoke	P Trotter	D Kirkland
Treeing Walker Coonhound	V Abbott	J Hoke	P Trotter	D Kirkland
Whippet	V Abbott	J Hoke	P Trotter	D Kirkland
<b>Working Group</b>	<b>P Trotter</b>	<b>R Shreve</b>	<b>C Hutt(*)</b>	<b>D Cline</b>
<b>NOHS Working Group</b>	<b>J Hoke</b>	<b>A Brown</b>	<b>I Jech</b>	<b>C Wilson</b>
Akita	P Trotter	R Shreve	I Jech	C Wilson
Alaskan Malamute	P Trotter	R Shreve	I Jech	C Wilson
Anatolian Shepherd Dog	P Trotter	R Shreve	C Hutt	D Cline
Bernese Mountain Dog	P Trotter	R Shreve	I Jech	C Wilson
Black Russian Terrier	P Trotter	R Shreve	C Hutt	D Cline
Boerboel	P Trotter	R Shreve	C Hutt	D Cline
Boxer	P Trotter	R Shreve	I Jech	D Cline
Bullmastiff	P Trotter	R Shreve	I Jech	C Wilson
Cane Corso	P Trotter	R Shreve	C Hutt	D Cline
Chinook	P Trotter	R Shreve	C Hutt	D Cline
Danish-Swedish Farmdog	P Trotter	R Shreve	C Hutt(*)	D Cline

*\* See Page 5 for Open Class Divisions.*

	Thursday	Friday	Saturday	Sunday
Doberman Pinscher	J Hoke(*)	R Shreve	I Jech	D Cline
Dogo Argentino	P Trotter	R Shreve	C Hutt	D Cline
Dogue de Bordeaux	P Trotter	R Shreve	C Hutt	D Cline
German Pinscher	P Trotter	R Shreve	C Hutt(*)	D Cline
Giant Schnauzer	P Trotter	R Shreve	C Hutt	D Cline
Great Dane	P Trotter	R Shreve	I Jech	C Wilson
Great Pyrenees	P Trotter	R Shreve	I Jech	C Wilson
Greater Swiss Mountain Dog	P Trotter	R Shreve	C Hutt	D Cline
Komondor	P Trotter	R Shreve	C Hutt	D Cline
Kuvasz	P Trotter	R Shreve	C Hutt	C Wilson
Leonberger	P Trotter	R Shreve	C Hutt	D Cline
Mastiff	P Trotter	R Shreve	I Jech	C Wilson
Neapolitan Mastiff	P Trotter	R Shreve	C Hutt	D Cline
Newfoundland	P Trotter	R Shreve	I Jech	D Cline
Portuguese Water Dog	P Trotter	R Shreve	C Hutt	D Cline
Rottweiler	P Trotter	J Hoke(*)	I Jech	D Cline
St. Bernard	D Cline	A Brown	I Jech	C Wilson
Samoyed	P Trotter	R Shreve	I Jech	D Cline
Siberian Husky	P Trotter	R Shreve	I Jech	C Wilson
Standard Schnauzer	P Trotter	R Shreve	C Hutt	C Wilson
Tibetan Mastiff	P Trotter	R Shreve	C Hutt	D Cline
<b>Terrier Group</b>	<b>D Cline</b>	<b>D Kirkland</b>	<b>R Shreve</b>	<b>V Abbott</b>
<b>NOHS Terrier Group</b>	<b>V Abbott</b>	<b>J Hoke</b>	<b>I Jech</b>	<b>R Shreve</b>
Airedale Terrier	D Cline	D Kirkland	R Shreve	V Abbott
American Hairless Terrier	D Cline	D Kirkland	R Shreve	V Abbott
American Staffordshire Terrier	D Cline	D Kirkland	R Shreve	V Abbott
Australian Terrier	D Cline	D Kirkland	R Shreve	V Abbott
Bedlington Terrier	D Cline	D Kirkland	R Shreve	V Abbott
Border Terrier	D Cline	D Kirkland	R Shreve	V Abbott
Colored Bull Terrier	D Cline	D Kirkland	R Shreve	V Abbott
White Bull Terrier	D Cline	D Kirkland	R Shreve	V Abbott
Cairn Terrier	D Cline	D Kirkland	R Shreve	V Abbott
Cesky Terrier	D Cline	D Kirkland	R Shreve	V Abbott
Dandie Dinmont Terrier	D Cline	D Kirkland	R Shreve	V Abbott
Smooth Fox Terrier	D Cline	D Kirkland	R Shreve	V Abbott
Wire Fox Terrier	D Cline	D Kirkland	R Shreve	V Abbott
Glen of Imaal Terrier	D Cline	D Kirkland	R Shreve	V Abbott
Irish Terrier	D Cline	D Kirkland	R Shreve	V Abbott
Kerry Blue Terrier	D Cline	D Kirkland	R Shreve	V Abbott
Lakeland Terrier	D Cline	D Kirkland	R Shreve	V Abbott
Standard Manchester Terrier	D Cline	D Kirkland	R Shreve	V Abbott
Miniature Bull Terrier	D Cline	D Kirkland	R Shreve	V Abbott
Miniature Schnauzer	D Cline	D Kirkland	R Shreve	V Abbott
Norfolk Terrier	D Cline	D Kirkland	R Shreve	V Abbott
Norwich Terrier	D Cline	D Kirkland	R Shreve	V Abbott
Parson Russell Terrier	D Cline	D Kirkland	R Shreve	V Abbott
Rat Terrier	D Cline	D Kirkland	R Shreve	V Abbott
Russell Terrier	D Cline	D Kirkland	R Shreve	V Abbott
Scottish Terrier	D Cline	D Kirkland	R Shreve	V Abbott
Sealyham Terrier	D Cline	D Kirkland	R Shreve	V Abbott
Skye Terrier	D Cline	D Kirkland	R Shreve	V Abbott
Soft Coated Wheaten Terrier	D Cline	D Kirkland	R Shreve	V Abbott
Staffordshire Bull Terrier	D Cline	D Kirkland	R Shreve	V Abbott
Welsh Terrier	D Cline	D Kirkland	R Shreve	V Abbott
West Highland White Terrier	D Cline	D Kirkland	R Shreve	P Trotter
<b>Toy Group</b>	<b>D Kirkland</b>	<b>P Trotter</b>	<b>J Hoke</b>	<b>L Abbott</b>
<b>NOHS Toy Group</b>	<b>L Abbott</b>	<b>A Brown</b>	<b>D Kirkland</b>	<b>P Trotter</b>
Affenpinscher	D Kirkland	A Brown	J Hoke	L Abbott
Biewer Terrier	D Kirkland	P Trotter	J Hoke	L Abbott
Brussels Griffon	D Kirkland	A Brown(*)	J Hoke	L Abbott

*\* See Page 5 for Open Class Divisions.*

	Thursday	Friday	Saturday	Sunday
Cavalier King Charles Spaniel	D Kirkland	A Brown(*)	P Trotter	L Abbott
Long Coat Chihuahua	D Kirkland	A Brown	J Hoke	P Trotter
Smooth Coat Chihuahua	D Kirkland	A Brown	J Hoke	P Trotter
Chinese Crested	D Kirkland	A Brown	J Hoke	L Abbott
B & P C English Toy Spaniel	D Kirkland	P Trotter	J Hoke	L Abbott
K C & R English Toy Spaniel	D Kirkland	P Trotter	J Hoke	L Abbott
Havanese	D Kirkland	P Trotter	J Hoke	L Abbott
Italian Greyhound	D Kirkland	A Brown	J Hoke	L Abbott
Japanese Chin	D Kirkland	A Brown(*)	J Hoke	L Abbott
Maltese	D Kirkland	A Brown	J Hoke	L Abbott
Toy Manchester Terrier	D Kirkland	P Trotter	J Hoke	L Abbott
Miniature Pinscher	D Kirkland	A Brown	J Hoke	L Abbott
Papillon	D Kirkland	A Brown	P Trotter	L Abbott
Pekingese	D Kirkland	A Brown(*)	J Hoke	P Trotter
Pomeranian	D Kirkland	A Brown(*)	J Hoke	P Trotter
Toy Poodle	D Kirkland	A Brown(*)	J Hoke	L Abbott
Pug	D Kirkland	A Brown(*)	J Hoke	P Trotter
Russian Toy	D Kirkland	A Brown(*)	J Hoke	L Abbott
Shih Tzu	D Kirkland	D Cline	J Hoke	P Trotter
Silky Terrier	D Kirkland	P Trotter	J Hoke	L Abbott
Toy Fox Terrier	D Kirkland	P Trotter	J Hoke	L Abbott
Yorkshire Terrier	D Kirkland	D Cline	J Hoke	L Abbott
<b>Non-Sporting Group</b>	<b>L Abbott</b>	<b>D Cline</b>	<b>R Shreve</b>	<b>J Hoke</b>
<b>NOHS Non-Sporting Group</b>	<b>V Abbott</b>	<b>A Brown</b>	<b>C Hutt</b>	<b>R Shreve</b>
American Eskimo Dog	L Abbott	D Cline	V Abbott	J Hoke
Bichon Frise	L Abbott	D Cline	V Abbott	J Hoke
Boston Terrier	L Abbott	D Cline	V Abbott	J Hoke
Bulldog	L Abbott	D Cline	V Abbott	J Hoke
Chinese Shar-Pei	L Abbott	D Cline	V Abbott	J Hoke
Chow Chow	L Abbott	D Cline	V Abbott	J Hoke
Coton de Tulear	L Abbott	D Cline	V Abbott	J Hoke
Dalmatian	L Abbott	D Cline	V Abbott	J Hoke
Finnish Spitz	L Abbott	D Cline	V Abbott	J Hoke
French Bulldog	L Abbott	D Cline	V Abbott	J Hoke
Keeshond	L Abbott	D Cline	V Abbott	J Hoke
Lhasa Apso	L Abbott	D Cline	V Abbott	J Hoke
Lowchen	L Abbott	D Cline	V Abbott	J Hoke
Norwegian Lundehund	L Abbott	D Cline	V Abbott	J Hoke
Miniature Poodle	L Abbott	A Brown(*)	V Abbott	J Hoke
Standard Poodle	L Abbott	A Brown(*)	V Abbott	J Hoke
Schipperke	L Abbott	D Cline	V Abbott	J Hoke
Shiba Inu	L Abbott	P Trotter	V Abbott	J Hoke
Tibetan Spaniel	L Abbott	D Cline	V Abbott	J Hoke
Tibetan Terrier	L Abbott	D Cline	V Abbott	J Hoke
Xoloitzcuintli	L Abbott	D Cline	V Abbott	J Hoke
<b>Herding Group</b>	<b>R Shreve</b>	<b>P Trotter</b>	<b>D Kirkland</b>	<b>C Hutt</b>
<b>NOHS Herding Group</b>	<b>D Cline</b>	<b>J Hoke</b>	<b>V Savioli</b>	<b>L Abbott</b>
Australian Cattle Dog	R Shreve	L Abbott	D Kirkland	C Hutt
Australian Shepherd	R Shreve	L Abbott	D Kirkland	C Hutt
Bearded Collie	R Shreve	L Abbott	D Kirkland	C Hutt
Beauceron	R Shreve	L Abbott	D Kirkland	C Hutt
Belgian Laekenois	R Shreve	L Abbott	D Kirkland	C Hutt
Belgian Malinois	R Shreve	L Abbott	D Kirkland	C Hutt
Belgian Sheepdog	R Shreve	L Abbott	D Kirkland	C Hutt
Belgian Tervuren	R Shreve	L Abbott	D Kirkland	C Hutt
Bergamasco Sheepdog	R Shreve	P Trotter	D Cline	L Abbott
Berger Picard	R Shreve	P Trotter	D Cline	L Abbott
Border Collie	R Shreve	P Trotter	D Cline	L Abbott
Bouvier des Flandres	R Shreve	P Trotter	D Cline	L Abbott
Briard	R Shreve	P Trotter	D Kirkland	L Abbott

*\* See Page 5 for Open Class Divisions.*

	Thursday	Friday	Saturday	Sunday
Canaan Dog	R Shreve	P Trotter	D Kirkland	L Abbott
Cardigan Welsh Corgi	R Shreve	L Abbott	D Kirkland	C Hutt
Rough Collie	R Shreve	P Trotter	D Cline	L Abbott
Smooth Collie	R Shreve	P Trotter	D Cline	L Abbott
Entlebucher Mountain Dog	R Shreve	P Trotter	D Kirkland	L Abbott
Finnish Lapphund	R Shreve	P Trotter	D Kirkland	L Abbott
German Shepherd Dog	R Shreve	P Trotter	D Kirkland	L Abbott
Icelandic Sheepdog	R Shreve	P Trotter	D Kirkland	L Abbott
Lancashire Heeler	R Shreve	P Trotter	D Kirkland	L Abbott
Miniature American Shepherd	R Shreve	L Abbott	D Kirkland	C Hutt
Mudi	R Shreve	P Trotter	D Kirkland	L Abbott
Norwegian Buhund	R Shreve	P Trotter	D Kirkland	L Abbott
Old English Sheepdog	R Shreve	P Trotter	D Kirkland	L Abbott
Pembroke Welsh Corgi	R Shreve	L Abbott	V Savioli	J Hoke(*)
Polish Lowland Sheepdog	R Shreve	P Trotter	D Kirkland	L Abbott
Puli	R Shreve	P Trotter	D Kirkland	L Abbott
Pumi	R Shreve	P Trotter	D Kirkland	L Abbott
Pyrenean Shepherd	R Shreve	P Trotter	D Kirkland	L Abbott
Shetland Sheepdog	R Shreve	P Trotter	D Cline	L Abbott
Spanish Water Dog	R Shreve	P Trotter	D Kirkland	L Abbott
Swedish Vallhund	R Shreve	P Trotter	D Kirkland	L Abbott
<b>Miscellaneous</b>	<b>D Cline</b>	<b>D Kirkland</b>	<b>V Abbott</b>	<b>P Trotter</b>
Alaskan Klee Kai	D Cline	D Kirkland	V Abbott	P Trotter
Basset Fauve de Bretagne	D Cline	D Kirkland	V Abbott	P Trotter
Bolognese	D Cline	D Kirkland	V Abbott	P Trotter
Czechoslovakian Vlcak	D Cline	D Kirkland	V Abbott	P Trotter
Dutch Shepherd	D Cline	D Kirkland	V Abbott	P Trotter
German Spitz	D Cline	D Kirkland	V Abbott	P Trotter
Japanese Akitainu	D Cline	D Kirkland	V Abbott	P Trotter
Kai Ken	D Cline	D Kirkland	V Abbott	P Trotter
Norrbottenspets	D Cline	D Kirkland	V Abbott	P Trotter
Peruvian Inca Orchid	D Cline	D Kirkland	V Abbott	P Trotter
Portuguese Podengo	D Cline	D Kirkland	V Abbott	P Trotter
Pyrenean Mastiff	D Cline	D Kirkland	V Abbott	P Trotter
Russian Tsvetnaya Bolonka	D Cline	D Kirkland	V Abbott	P Trotter
Small Munsterlander	D Cline	D Kirkland	V Abbott	P Trotter
Teddy Roosevelt Terrier	D Cline	D Kirkland	V Abbott	P Trotter
Yakutian Laika	D Cline	D Kirkland	V Abbott	P Trotter
<b>Junior Showmanship</b>	<b>P Trotter</b>	<b>V Abbott</b>	<b>C Hutt</b>	<b>C Wilson</b>
Best Begnr. Puppy In Show	~ not offered ~	~ not offered ~	V Savioli	C Hutt
Begnr. Puppy - Sporting Group	~ not offered ~	~ not offered ~	V Savioli	C Hutt
Begnr. Puppy - Hound Group	~ not offered ~	~ not offered ~	V Savioli	C Hutt
Begnr. Puppy - Working Group	~ not offered ~	~ not offered ~	V Savioli	C Hutt
Begnr. Puppy - Terrier Group	~ not offered ~	~ not offered ~	V Savioli	C Hutt
Begnr. Puppy - Toy Group	~ not offered ~	~ not offered ~	V Savioli	C Hutt
Begnr. Puppy - Non-Sporting Grp	~ not offered ~	~ not offered ~	V Savioli	C Hutt
Begnr. Puppy - Herding Group	~ not offered ~	~ not offered ~	V Savioli	C Hutt
Begnr. Puppy - Misc Breeds	~ not offered ~	~ not offered ~	V Savioli	C Hutt
Begnr. Puppy-FSSbreeds(Ex.Misc)	~ not offered ~	~ not offered ~	V Savioli	C Hutt

\* See Page 5 for Open Class Divisions.



## Premier Grooming Space Reservation Form

Ozark Mountain Fall Classic

Closing Date 10/22/2025

Name: \_\_\_\_\_

Address: \_\_\_\_\_

City: \_\_\_\_\_ State: \_\_\_\_\_ Zip: \_\_\_\_\_

Phone: \_\_\_\_\_ Cellular: \_\_\_\_\_

Premier Grooming:	10' x 20'	\$250.00
-------------------	-----------	----------

1. A limited number of grooming spaces will be available by reservation near ringside on a first come, first serve basis.
2. Your space will be reserved and available on any day of the cluster.
3. Power will be available for each reserved spot.
4. Reservations will **NOT** be accepted unless accompanied by your check.
5. The space will be available only in 10' x 20' increments.
6. Reservations are four days. No partial reservations will be accepted.
7. No refunds.

**8. Set Up for Premier Grooming is at 12 Noon on Wednesday, November 5, 2025**

**Send Form with checks made payable to OMFC and mail to:**

Sherry Gibbany  
158 Bland St  
Cotter, AR 72626

# Reserved Grooming Space Form

Reservations must be made via regular US Mail  
Postmarked by closing date, October 22, 2025  
With full payment enclosed

**No other types of reservation requests will be accepted**

Name: \_\_\_\_\_

Address: \_\_\_\_\_

City: \_\_\_\_\_ State: \_\_\_\_\_ Zip: \_\_\_\_\_

Phone: \_\_\_\_\_ Cellular: \_\_\_\_\_

Email: \_\_\_\_\_

Space Size	Cost	Number of Spaces	Total Due
5 x 10 Foot	\$30.00	_____	\$_____

Make checks payable to: **OMFC**

Send Form with payment to:

**Sherry Gibbany**  
**158 Bland St**  
**Cotter, AR 72626**

No special requests will be fulfilled. All space sizes are approximate. Fees are nonrefundable. Space will be identified by name and numbers. A master layout will be available in the grooming area. Exhibitors are responsible for keeping their grooming area reasonably cleaned and picked up.

**Reservation Deadline is October 22, 2025**

Signature: \_\_\_\_\_

**[ ] Check here if you will be attending Tri-State KC & Ozark Mountain Fall Classic to retain the same grooming spot for both weekends.**

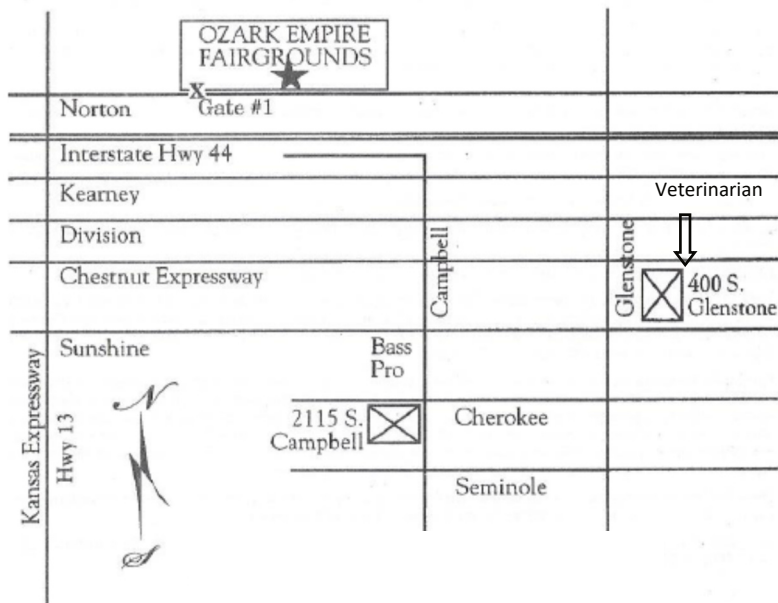
### Hotels & Motels That Will Accept Dogs

**Make Reservations Early Due To Other Activities In The Area That Weekend**  
**All Prices are subject to change, so please check with motels first and check their pet policy**

<b>Double Tree Hotel (Host Hotel)</b> .....	(417) 831-3131
2431 N Glenstone Ave, Springfield, MO 65803	
<b>Best Western Coach House Inn</b> .....	(417) 862-0701
2535 N Glenstone Ave, Springfield, MO 65803 • Exit 80 A	
<b>Budget Inn</b> .....	(417) 866-7400
2455 N Glenstone Ave, Springfield, MO 65803 • Exit 80A	
<b>Quality Inn &amp; Suites (formerly Krystal Aire)</b> .....	(417) 869-0001
2745 N Glenstone Ave, Springfield, MO 65803 • Exit 80A	
<b>Plaza Hotel</b> .....	(417) 864-7333
333 S John Q Hammons Pkwy, Springfield, MO 65806	
<b>Greenstay Hotel &amp; Suites</b> .....	(417) 863-1440
222 N Ingram Mill Rd, Springfield, MO 65802	
<b>LaQuinta Airport Plaza</b> .....	(417) 447-4466
2445 N Airport Plaza Ave, Springfield, MO 65803	

### Routes To The Show

From I-44 Exit Highway 13 North, East on Norton Rd  
Missouri Entertainment & Events Center Springfield, Missouri



**Ozark Mountain Fall Classic  
AKC Sanctioned B Match  
Friday, November 7, 2025**

Judging Begins 30 minutes after Best in Show  
Entry Fee: \$10.00 • Pre-Entry \$7.00  
**PRE-ENTRIES POSTMARKED BY OCTOBER 24, 2025**

**CLASSES**

Conformation

Puppy: 3-6 months • 6-9 months • 9-12 months

Adults: Open

\*\*\*\*Ribbons & Prizes Offered\*\*\*\*

For mailing advance entries:

Sherry Gibbany

158 Bland St, Cotter, AR 72626

sherrygibbany57@gmail.com 870-416-7062

---

**ENTRY FORM FOR ALL-BREED SANCTIONED B-MATCH**

Make checks payable to: Ozark Mountain Fall Classic

Breed: \_\_\_\_\_ Variety: \_\_\_\_\_

Sex: \_\_\_\_\_ Class: \_\_\_\_\_ Date of Birth: \_\_\_\_\_

Name: \_\_\_\_\_ AKC #: \_\_\_\_\_

Owner's Name: \_\_\_\_\_

Address: \_\_\_\_\_

Email Address: \_\_\_\_\_

I (we) certify and represent that the dog entered is not a hazard to persons or other dogs.

Signature: \_\_\_\_\_

# CAER EYE CLINIC

## PRE-REGISTRATION RECOMMENDED-LIMIT 90 DOGS

**\*\*WALK-INS will be taken AS SCHEDULE ALLOWS FINAL EYE DROPS will be giving no later than 3 pm\*\***

**SATURDAY, November 8, 2025**

**Hours: 9am to 3 pm**

**\$40 per test      DISCOUNT PRICE (5 or more owned/co owned discount) \$38.00 per test**

For those breeds (i.e; Dalmatians, merle breeds) needing pre-drop exam – please arrive 20 minutes before appointment time.

OFA ON-LINE VET SUBMISSIONS – go to <http://online.ofa.org> – create your application form, print out form and bring with you.

You still need to complete and submit this clinic form to sign up for this clinic

**Dr. Amy Hunkeler DVM, Diplomate ACVO, MBA**

**Eye Care for Animals, Overland Park KS, 913-381-3937**

[www.eyecareforanimals.com](http://www.eyecareforanimals.com)

**Make checks payable to Ozark Mountain Fall Classic (OMFC)**

**We always fill up so mail early to secure your spot . . . . . DUE by October 31, 2025**

Bambi Walden  
182 Kennel Lane  
Flippin, Arkansas 72634  
870-404-4043  
[bambilee274@gmail.com](mailto:bambilee274@gmail.com)

I will be using the OFA on-line  
test result submissions to OFA check this box



**IF YOU HAVE MULTIPLE DOGS, PLEASE BRING SOMEONE WITH YOU TO ASSIST DURING THE EXAMS.**

Owner \_\_\_\_\_

Address, City & State \_\_\_\_\_

Phone # \_\_\_\_\_ email \_\_\_\_\_

Dog's Call Name	Breed	Showing? (circle one)		Pre-drop exam (check this box)	Cost per test
_____	_____	yes	no	<input type="checkbox"/>	_____
_____	_____	yes	no	<input type="checkbox"/>	_____
_____	_____	yes	no	<input type="checkbox"/>	_____
_____	_____	yes	no	<input type="checkbox"/>	_____
_____	_____	yes	no	<input type="checkbox"/>	_____

Use additional paper as needed

**TOTAL ENCLOSED CHECK AMOUNT** \_\_\_\_\_

**BEGINNING THURSDAY NOVEMBER 6<sup>TH</sup> AND 7<sup>TH</sup> – STOP BY TO SCHEDULE YOUR SPECIFIC APPOINTMENT TIME.**

**A CLUB MEMBER AND SIGN UP SHEET WILL BE AVAILABLE AT THE CLINIC TABLE DURING POSTED HOURS AT THE SIGN UP TABLE.**

## Attention Exhibitors

**By entering our show**, you agree to abide by show guidelines. Anyone who does not abide by the regulations set forth by the cluster may be asked to leave.

The Show Site will be available to exhibitors on Wednesday, November 5, 2025 after 9:00 am, 6:00 am on Thursday, Friday, Saturday, and Sunday.

### **\*\*Please Note\*\***

#### **Premier Grooming Set Up is at 12 Noon on Wednesday, November 5, 2025**

Dogs must be removed from the show site immediately following Best in Show judging on Sunday, November 9, 2025. The building will be locked from 10:00 pm to 6:00 am, Wednesday through Saturday nights. A security person will be on duty each night during these hours as a courtesy to Exhibitors. Each dog that is left in the facility overnight must be identified with a tag stating the owner/agent name and where they can be reached in case of an emergency. In the event of multiple entries, one tag will be sufficient provided it clearly outlines the number of dogs and the area in which they are crated.

The Show Site will be available to vendors on Wednesday, November 5, 2025 at 8:00 am

The Show Giving Club, Members, Directors, Agents, Superintendent and Employees are not Responsible for Loss or Damage to, or Death of Any Dogs Exhibited or for the Possessions of Any Participant, whether the Result of an Accident or any other cause. It is expressly understood that every dog at this show is in the care, custody and control of the owner or handler during the entire time the dog is on the show premises.

Do Not Leave Any Dogs in Closed Vehicles. The Club Reserves the Right to Remove Any Dogs found in Distress in a Vehicle on the Fairgrounds.

Temporary Crating at ringside for small breeds only - available in designated area for purposes of showing only. Area is at East end of Building against wall. Dogs must be in crates; cannot be left unattended (*except for agent being in ring*); may arrive no more than 10 minutes before judging for that breed and must be removed immediately after judging for that breed.

**RV Parking** and Hookups are under control of the Ozarks Empire Fairgrounds. It is on the West side of Eplex. Full Service Available away from Eplex (50 amps or 30 amps) **\$50.00 per night**.

Dump Site Available. Please contact the fairgrounds at 417-833-2660 about reserving a parking space.

No Un-entered Dogs in the Show Building.

No Private X-Pens or Cocker Crates in the Show Building.

No Smoking in the Building.

### **Media**

Videotaping by individuals for their own personal use will be allowed outside show ring only. The show committees reserve the right to regulate the placement of cameras to prevent interference with traffic placement and showing of dogs. No unauthorized photography.

## **Booth Space Rental**

**New Lower Prices For All 4 Days!**

10x10 Ft - \$250.00 • 10x20 Ft - \$400.00 • 10x30 Ft - \$600.00 • 10x40 Ft - \$ 800.00

Contact: **Bobby Brandon**

417-205-5343 • [crownorgis@gmail.com](mailto:crownorgis@gmail.com)

**Booth Fees must be in by October 16, 2024**

**Please make check payable to OMFC and mail to:**

**Bobby Brandon, 14312 Lawrence 1137, Mt Vernon, MO 65712**

**VENDOR CITY LICENSE**

30 days - \$5.00 • Year - \$10.00

# Two All-Breed Dog Shows



*Licensed by the American Kennel Club*

## Thursday, November 6, 2025

All Breed show with Junior Showmanship #2025246416<sup>1</sup>

## Friday, November 7, 2025

All Breed show with Junior Showmanship #2025246417<sup>1</sup>

### AKC National Owner-Handled Series Both Days

<sup>1</sup> Limited to 1500 Entries

## Officers

Barbara Allen ..... President  
Jerry O'Dell ..... Vice President  
Sherry Gibbany ..... Secretary/ Treasurer  
158 Bland St, Cotter, AR 72626

## Board of Directors

Wendy Ethier • DeLynn Young • Shantel Wooten • Ellen Brock • Bambi Walden • Lila Bauwens

## Show Committee

Jerry O'Dell ..... Event Chair  
182 MC 7030, Flippin, AR 72634  
870-577-6353 • jodell354@gmail.com  
Sherry Gibbany ..... Assistant Event Chair

### Event Committee

Jerry O'Dell, Barb Allen, Sherry Gibbany, Bambi Walden and Shantel Wooten

## Committees

Sherry Gibbany ..... Grooming  
Barbara Allen ..... Hospitality  
Margaret Rothschilder ..... Raffle  
Sherry Gibbany ..... Trophies  
Bobby Brandon ..... Vendors

# **Thursday, November 6, 2025**

## **BEST IN SHOW & VARIETY GROUP PRIZES**

### **FOR BEST IN SHOW**

\$500.00 CASH offered by North Arkansas Kennel Club  
ROSETTE offered by the OZARK MOUNTAIN FALL CLASSIC

### **FOR RESERVE BEST IN SHOW**

\$100.00 CASH offered by Ellen Brock, Brock Ranch St. Bernards,  
in memory of GRCH Dilettante's Quintessa  
ROSETTE offered by the OZARK MOUNTAIN FALL CLASSIC

### **FOR AKC NATIONAL OWNER-HANDLED BEST IN SHOW**

\$100.00 CASH offered by Kathy Regan, Li'l Paws Samoyeds  
ROSETTE offered by the OZARK MOUNTAIN FALL CLASSIC

### **FOR AKC NATIONAL OWNER-HANDLED RESERVE BEST IN SHOW**

\$50.00 CASH offered by North Arkansas Kennel Club  
ROSETTE offered by the OZARK MOUNTAIN FALL CLASSIC

### **FOR FIRST IN EACH REGULAR VARIETY GROUP**

\$50.00 CASH

**SPORTING GROUP:** offered by Sherry Gibbany  
**HOUND GROUP:** offered by North Arkansas Kennel Club  
**WORKING GROUP:** offered by Utopia Saints, Barbara Sarti-Allen  
**TERRIER GROUP:** offered by Chuck & Nancy Woods  
**TOY GROUP:** offered by North Arkansas Kennel Club  
**NON-SPORTING GROUP:** offered by DeLynn Young  
**HERDING GROUP:** offered by North Arkansas Kennel Club

### **FOR FIRST, SECOND, THIRD & FOURTH IN EACH REGULAR VARIETY GROUP**

ROSETTE offered by the OZARK MOUNTAIN FALL CLASSIC

### **FOR FIRST IN EACH AKC NATIONAL OWNER-HANDLED VARIETY GROUP**

\$25.00 CASH

**SPORTING GROUP:** offered by Janice Johnson  
**HOUND GROUP:** offered by Shantel Wooten  
**WORKING GROUP:** offered by North Arkansas Kennel Club  
**TERRIER GROUP:** offered by Nancy & Chuk Woods  
**TOY GROUP:** offered by North Arkansas Kennel Club  
**NON-SPORTING GROUP:** offered by Bambi Walden, VIP Chow Chows  
**HERDING GROUP:** offered by North Arkansas Kennel Club

### **FOR FIRST, SECOND, THIRD & FOURTH IN EACH**

### **AKC NATIONAL OWNER-HANDLED VARIETY GROUP**

ROSETTE offered by the OZARK MOUNTAIN FALL CLASSIC

## **BREED PRIZES**

A rosette will be given for Best of Breed in any breed having 10 or more entries in addition to any other listed prizes.

Only when these prizes are listed under a breed, unless otherwise indicated, they will be Cash as follows: BEST OF BREED/VARIETY (\$20.00) • BEST OF OPPOSITE SEX TO BEST OF BREED (\$15.00) • BEST OF WINNERS (\$15.00) • SELECT (\$10.00) • WINNERS DOG (\$10.00) • WINNERS BITCH (\$10.00)



## **SPORTING BREEDS**

### **RETRIEVERS (LABRADOR)**

**WINNERS DOG**- offered by Janice Johnson

**WINNERS BITCH**- offered by Lori Sloas, RiverMist Labradors

## **HOUND BREEDS**

### **RHODESIAN RIDGEBACKS**

**BEST OF WINNERS** - offered by Shantel Wooten

**WINNERS DOG** - offered by Shantel Wooten

**WINNERS BITCH** - offered by Shantel Wooten

## **WORKING BREEDS**

### **SAINT BERNARDS**

**BEST OF BREED** - offered by Ellen Brock, Brock Ranch St. Bernards in memory of GRCH Dilettante's Quintessa

**BEST OF WINNERS** - offered by Ellen Brock, Brock Ranch St. Bernards in memory of GRCH Dilettante's Quintessa

**BEST OF OPPOSITE SEX TO BEST OF BREED** - offered by Ellen Brock, Brock Ranch St. Bernards in memory of GRCH Dilettante's Quintessa

**SELECT DOG** - offered by Ellen Brock, Brock Ranch St. Bernards in memory of GRCH Dilettante's Quintessa

**SELECT BITCH** - offered by Ellen Brock, Brock Ranch St. Bernards in memory of GRCH Dilettante's Quintessa

**WINNERS DOG** - offered by Ellen Brock, Brock Ranch St. Bernards in memory of GRCH Dilettante's Quintessa

**WINNERS BITCH** - offered by Ellen Brock, Brock Ranch St. Bernards in memory of GRCH Dilettante's Quintessa

### **SAMOYED**

**BEST OF BREED** - offered by Kathy Regan. Li'l Paws Samoyeds

**BEST OF WINNERS** -

**BEST OF OPPOSITE SEX TO BEST OF BREED** - offered by Kathy Regan. Li'l Paws Samoyeds

**SELECT DOG** - offered by Kathy Regan. Li'l Paws Samoyeds

**SELECT BITCH** - offered by Kathy Regan. Li'l Paws Samoyeds

**WINNERS DOG** - offered by Kathy Regan. Li'l Paws Samoyeds

**WINNERS BITCH** - offered by Kathy Regan. Li'l Paws Samoyeds

## **TOY BREEDS**

### **PAPILLON**

**WINNERS DOG** - offered by D'Barcy Papillons, C. J. Foster & Cj Titus

**WINNERS BITCH** - offered by D'Barcy Papillons, C. J. Foster & Cj Titus

## **NON-SPORTING BREEDS**

### **CHOW CHOWS**

**BEST OF BREED** - offered by Bambi Walden, VIP Chow Chows

### **MINIATURE POODLE**

**BEST OF BREED** - offered by Wendy Ethier

## **HERDING BREEDS**

### **BELGIAN SHEEPDOGS**

**BEST OF WINNERS** - offered by Patti Mole, Lakota Kennels

### **BELGIAN TERVUREN**

**BEST OF WINNERS** - offered by Patti Mole, Lakota Kennels

### **PEMBROKE WELSH CORGIS**

**BEST OF BREED** - offered by Linda Williams

# **Friday, November 7, 2025**

## **BEST IN SHOW & VARIETY GROUP PRIZES**

### **FOR BEST IN SHOW**

\$500.00 CASH offered by North Arkansas Kennel Club  
ROSETTE offered by the OZARK MOUNTAIN FALL CLASSIC

### **FOR RESERVE BEST IN SHOW**

\$100.00 CASH offered by Ellen Brock, Brock Ranch St. Bernards,  
in memory of GRCH Dilettante's Quintessa  
ROSETTE offered by the OZARK MOUNTAIN FALL CLASSIC

### **FOR AKC NATIONAL OWNER-HANDLED BEST IN SHOW**

\$100.00 CASH offered by Kathy Regan, Li'l Paws Samoyeds  
ROSETTE offered by the OZARK MOUNTAIN FALL CLASSIC

### **FOR AKC NATIONAL OWNER-HANDLED RESERVE BEST IN SHOW**

\$50.00 CASH offered by North Arkansas Kennel Club  
ROSETTE offered by the OZARK MOUNTAIN FALL CLASSIC

### **FOR FIRST IN EACH REGULAR VARIETY GROUP**

\$50.00 CASH

**SPORTING GROUP:** offered by North Arkansas Kennel Club  
**HOUND GROUP:** offered by North Arkansas Kennel Club  
**WORKING GROUP:** offered by Utopia Saints, Barbara Sarti-Allen  
**TERRIER GROUP:** offered by Chuck & Nancy Woods  
**TOY GROUP:** offered by North Arkansas Kennel Club  
**NON-SPORTING GROUP:** offered by North Arkansas Kennel Club  
**HERDING GROUP:** offered by North Arkansas Kennel Club

### **FOR FIRST, SECOND, THIRD & FOURTH IN EACH REGULAR VARIETY GROUP**

ROSETTE

Offered by the OZARK MOUNTAIN FALL CLASSIC

### **FOR FIRST IN EACH AKC NATIONAL OWNER-HANDLED VARIETY GROUP**

\$25.00 CASH

**SPORTING GROUP:** offered by North Arkansas Kennel Club  
**HOUND GROUP:** offered by Shantel Wooten  
**WORKING GROUP:** offered by North Arkansas Kennel Club  
**TERRIER GROUP:** offered by Arlene Myslinski  
**TOY GROUP:** offered by North Arkansas Kennel Club  
**NON-SPORTING GROUP:** offered by Bambi Walden, VIP Chow Chows  
**HERDING GROUP:** offered by North Arkansas Kennel Club

### **FOR FIRST, SECOND, THIRD & FOURTH IN EACH AKC NATIONAL OWNER-HANDLED VARIETY GROUP**

ROSETTE

Offered by the OZARK MOUNTAIN FALL CLASSIC

## **BREED PRIZES**

A rosette will be given for Best of Breed in any breed having 10 or more entries in addition to any other listed prizes.

Only when these prizes are listed under a breed, unless otherwise indicated, they will be Cash as follows: BEST OF BREED/VARIETY (\$20.00) • BEST OF OPPOSITE SEX TO BEST OF BREED (\$15.00) • BEST OF WINNERS (\$15.00) • SELECT (\$10.00) • WINNERS DOG (\$10.00) • WINNERS BITCH (\$10.00)

## **HOUND BREEDS**

### **RHODESIAN RIDGEBACKS**

**BEST OF WINNERS** - offered by Shantel Wooten

**WINNERS DOG** - offered by Shantel Wooten

**WINNERS BITCH** - offered by Shantel Wooten

## **WORKING BREEDS**

### **SAINT BERNARDS**

**BEST OF BREED** - offered by Margaret & Lyle Rothschiller, Double R Saint Bernards

**BEST OF WINNERS** - offered by Margaret & Lyle Rothschiller, Double R Saint Bernards

**BEST OF OPPOSITE SEX TO BEST OF BREED** - offered by Margaret & Lyle Rothschiller, Double R Saint Bernards

**SELECT DOG** - offered by Margaret & Lyle Rothschiller, Double R Saint Bernards

**SELECT BITCH** - offered by Margaret & Lyle Rothschiller, Double R Saint Bernards

**WINNERS DOG** - offered by Margaret & Lyle Rothschiller, Double R Saint Bernards

**WINNERS BITCH** - offered by Margaret & Lyle Rothschiller, Double R Saint Bernards

**BEST VETERAN** - \$10 offered by Margaret & Lyle Rothschiller, Double R Saint Bernards

### **SAMOYED**

**BEST OF BREED** - offered by Kathy Regan. Li'l Paws Samoyeds

**BEST OF WINNERS** -

**BEST OF OPPOSITE SEX TO BEST OF BREED** - offered by Kathy Regan. Li'l Paws Samoyeds

**SELECT DOG** - offered by Kathy Regan. Li'l Paws Samoyeds

**SELECT BITCH** - offered by Kathy Regan. Li'l Paws Samoyeds

**WINNERS DOG** - offered by Kathy Regan. Li'l Paws Samoyeds

**WINNERS BITCH** - offered by Kathy Regan. Li'l Paws Samoyeds

## **TOY BREEDS**

### **PAPILLON**

**WINNERS DOG** - offered by D'Barcy Papillons, C. J. Foster & Cj Titus

**WINNERS BITCH** - offered by D'Barcy Papillons, C. J. Foster & Cj Titus

## **NON-SPORTING BREEDS**

### **CHOW CHOWS**

**BEST OF BREED** - offered by Tina Trujillo – 8" Chow plate by Theresa Sanchez

**BEST OF OPPOSITE SEX TO BEST OF BREED** - offered by Tina Trujillo – 8" Chow plate by Theresa Sanchez

**SELECT DOG** - offered by Tina Trujillo – 6" Chow plate by Theresa Sanchez

**SELECT BITCH** - offered by Tina Trujillo – 6" Chow plate by Theresa Sanchez

**WINNERS DOG** - offered by Tina Trujillo – 6" Chow plate by Theresa Sanchez

**WINNERS BITCH** - offered by Tina Trujillo – 6" Chow plate by Theresa Sanchez

**RESERVE WINNERS DOG** - offered by Tina Trujillo – 6" Chow plate by Theresa Sanchez

**RESERVE WINNERS BITCH** - offered by Tina Trujillo – 6" Chow plate by Theresa Sanchez

### **MINIATURE POODLES**

**BEST OF BREED** - offered by Wendy Ethier

## **HERDING BREEDS**

### **BELGIAN SHEEPDOGS**

**BEST OF WINNERS** - offered by Patti Mole, Lakota Kennels

### **BELGIAN TERVUREN**

**BEST OF WINNERS** - offered by Patti Mole, Lakota Kennels

### **PEMBROKE WELSH CORGIS**

**BEST OF BREED** - offered by Linda Williams

# Two All-Breed Dog Shows



*Member of the American Kennel Club*

## **Saturday, November 8, 2025**

All Breed show with Junior Showmanship #2025018803<sup>1</sup>  
4-6 Month Beginner Puppy Competition #2025018804

## **Sunday, November 9, 2025**

All Breed show with Junior Showmanship #2025018805<sup>1</sup>  
4-6 Month Beginner Puppy Competition #2025018806  
AKC National Owner-Handled Series Offered Both Days

<sup>1</sup> Limited to 1500 Entries

## **Officers**

Frank Lavoie .....	President
Tucker Peterson .....	Vice President
Emily Janes .....	Treasurer
Sandy Girth.....	Secretary

148 Paradise Dr., Rogersville MO 65742

## **Delegate to the American Kennel Club**

Frank Lavoie

## **Board of Directors**

Viki Karlovich • Angie Henderson • Jen Jenkins

## **Show Committee**

Linda Williams .....	Chair
14312 Lawrence 1137, Mt Vernon, MO 65712	
Frank Lavoie .....	Assistant Chair
3633 North Farm Road 71, Bois D'Arc, MO 65612	
Rebeca Barber .....	Assistant Chair

## **Event Committee**

Linda Williams, Frank Lavoie, Tucker Peterson, Sandy Girth, Rebecca Barber

## **Committees**

Tucker Peterson .....	Grooming
Rebecca Barber .....	Hospitality
Vicki Karlovich .....	Raffle
Frank Lavoie & Sandy Girth .....	Trophies
Bobby Brandon .....	Vendors

**Saturday, November 8, 2025**  
**Best In Show & Variety Group Prizes**

**FOR BEST IN SHOW**

\$500.00 CASH offered by the OZARKS KENNEL CLUB  
ROSETTE  
Offered by the OZARK MOUNTAIN FALL CLASSIC

**FOR RESERVE BEST IN SHOW**

\$250.00 CASH offered by the OZARKS KENNEL CLUB  
ROSETTE  
Offered by the OZARK MOUNTAIN FALL CLASSIC

**FOR AKC NATIONAL OWNER-HANDLED BEST IN SHOW**

\$200.00 CASH offered by the OZARKS KENNEL CLUB  
ROSETTE  
Offered by the OZARK MOUNTAIN FALL CLASSIC

**FOR AKC NATIONAL OWNER-HANDLED RESERVE BEST IN SHOW**

\$100.00 CASH offered by OZARKS KENNEL CLUB  
ROSETTE  
Offered by the OZARK MOUNTAIN FALL CLASSIC

**FOR FIRST IN EACH VARIETY GROUP**

Cooler with Logo  
Offered by the OZARKS KENNEL CLUB

**FOR FIRST, SECOND, THIRD & FOURTH IN EACH VARIETY GROUP**

ROSETTE  
Offered by the OZARK MOUNTAIN FALL CLASSIC

**FOR FIRST IN EACH AKC NATIONAL OWNER-HANDLED VARIETY GROUP**

Cooler with Logo  
Offered by the OZARKS KENNEL CLUB

**FOR FIRST, SECOND, THIRD & FOURTH IN EACH  
AKC NATIONAL OWNER-HANDLED VARIETY GROUP**

ROSETTE  
Offered by the OZARK MOUNTAIN FALL CLASSIC

**BREED PRIZES**

A rosette will be given for Best of Breed in any breed having 10 or more entries in addition to any other listed prizes.

**HOUND BREEDS**

**WHIPPET**

**BEST OF BREED** – Dog Food Storage Bag w/Logo offered by Rebecca Barber

**BEST OF WINNERS** – Towel w/Logo offered by Rebecca Barber

**BEST OF OPPOSITE SEX** – Tumbler w/Logo offered by Rebecca Barber

**WINNERS DOG** – 2 qt Pail w/Logo offered by Rebecca Barber

**WINNERS BITCH** – 2 qt Pail w/Logo offered by Rebecca Barber

**SELECT DOG** – 2 qt Pail w/Logo offered by Rebecca Barber

**SELECT BITCH** – 2 qt Pail w/Logo offered by Rebecca Barber

## WORKING BREEDS

### DOBERMAN PINCHER

All prizes offered by JuliAnna Cullison Hall

**BEST OF BREED** – Dog Food Storage Bag w/Logo

**BEST OF WINNERS** – Towel w/ Logo

**BEST OF OPPOSITE SEX** – Tumbler with Logo

**WINNERS DOG** – 2qt Pail w/logo

**WINNERS BITCH** – 2qt Pail w/Logo

**SELECT DOG** – 2qt Pail w/Logo

**SELECT BITCH** – 2qt Pail w/Logo

**BOBOH**- Cookie Jar w/Logo

### GIANT SCHNAUZER

**BEST OF BREED** – Dog Food Storage Bag w/Logo offered by Down Low Kennels (Frank Lavoie & Adam Duke)

**BEST OF WINNERS** – Towel w/Logo offered by Down Low Kennels (Frank Lavoie & Adam Duke)

**BEST OF OPPOSITE SEX** – Tumbler w/Logo offered by Down Low Kennels (Frank Lavoie & Adam Duke)

**WINNERS DOG** – 2 qt Pail w/Logo offered by Down Low Kennels (Frank Lavoie & Adam Duke)

**WINNERS BITCH** – 2 qt Pail w/Logo offered by Down Low Kennels (Frank Lavoie & Adam Duke)

**SELECT DOG** – 2 qt Pail w/Logo offered by Down Low Kennels (Frank Lavoie & Adam Duke)

**SELECT BITCH** – 2 qt Pail w/Logo offered by Down Low Kennels (Frank Lavoie & Adam Duke)

### MASTIFF

**BEST OF BREED** – Stained Glass Item offered by JT's Stained Glass

**WINNERS DOG / WINNERS BITCH** – Stained Glass Item offered by JT's Stained Glass

**BEST VETERAN** -- Stained Glass Item offered by JT's Stained Glass

## TERRIER BREEDS

### AUSTRALIAN TERRIER

**BEST OF BREED** – Dog Food Storage Bag w/Logo offered by Vicki Karlovich

**BEST OF WINNERS** – Towel w/Logo offered by Vicki Karlovich

**BEST OF OPPOSITE SEX** – Tumbler w/Logo offered by Vicki Karlovich

**WINNERS DOG** – 2 qt Pail w/Logo offered by Vicki Karlovich

**WINNERS BITCH** – 2 qt Pail w/Logo offered by Vicki Karlovich

**SELECT DOG** – 2 qt Pail w/Logo offered by Vicki Karlovich

**SELECT BITCH** – 2 qt Pail w/Logo offered by Vicki Karlovich

**BEST OF BREED OWNER-HANDLED** – Cookie Jar w/Logo offered by Vicki Karlovich

### NORWICH TERRIER

**BEST OF BREED** – Dog Food Storage Bag w/Logo offered by Down Low Kennels (Frank Lavoie & Adam Duke)

**BEST OF WINNERS** – Towel w/Logo offered by Down Low Kennels (Frank Lavoie & Adam Duke)

**BEST OF OPPOSITE SEX** – Tumbler w/Logo offered by Down Low Kennels (Frank Lavoie & Adam Duke)

**WINNERS DOG** – 2 qt Pail w/Logo offered by Down Low Kennels (Frank Lavoie & Adam Duke)

**WINNERS BITCH** – 2 qt Pail w/Logo offered by Down Low Kennels (Frank Lavoie & Adam Duke)

**SELECT DOG** – 2 qt Pail w/Logo offered by Down Low Kennels (Frank Lavoie & Adam Duke)

**SELECT BITCH** – 2 qt Pail w/Logo offered by Down Low Kennels (Frank Lavoie & Adam Duke)

**BEST OF BREED OWNER-HANDLED** – Cookie Jar w/Logo offered by Down Low Kennels (Frank Lavoie & Adam Duke)

### AMERICAN HAIRLESS TERRIER

All prizes offered by Jacqueline Riley & Pauline Pitch

**BEST OF BREED** – Dog Food Storage Bag w/Logo

**BEST OF WINNERS** – Towel w/ Logo

**BEST OF OPPOSITE SEX** – Tumbler with Logo

**WINNERS DOG** – 2qt Pail w/logo  
**WINNERS BITCH** – 2qt Pail w/Logo  
**SELECT DOG** – 2qt Pail w/Logo  
**SELECT BITCH** – 2qt Pail w/Logo  
**BOBOH**- Cookie Jar w/Logo

## **TOY BREEDS**

### **SHIH TZU**

All prizes offered by Kristie Miller (Intuition Shih Tzu)

**BEST OF BREED** – Dog Food Storage Bag w/Logo  
**BEST OF WINNERS** – Towel w/ Logo  
**BEST OF OPPOSITE SEX** – Tumbler with Logo  
**WINNERS DOG** – 2qt Pail w/logo  
**WINNERS BITCH** – 2qt Pail w/Logo  
**SELECT DOG** – 2qt Pail w/Logo  
**SELECT BITCH** – 2qt Pail w/Logo  
**BOBOH**- Cookie Jar w/Logo

### **MINIATURE POODLE**

All prizes offered by Bella Williams

**BEST OF BREED** – Dog Food Storage Bag w/Logo  
**BEST OF WINNERS** – Towel w/ Logo  
**BEST OF OPPOSITE SEX** – Tumbler with Logo  
**WINNERS DOG** – 2qt Pail w/logo  
**WINNERS BITCH** – 2qt Pail w/Logo  
**SELECT DOG** – 2qt Pail w/Logo  
**SELECT BITCH** – 2qt Pail w/Logo  
**BOBOH**- Cookie Jar w/Logo

## **HERDING BREEDS**

### **PEMBROKE WELSH CORGIS**

**WINNERS DOG** - Lead Bag offered by Linda Williams (Crown Corgis)

### **SHETLAND SHEEPDOGS**

All prizes offered by Lucky Brook (Emily Janes)

**BEST OF BREED** – Dog Food Storage Bag w/Logo  
**BEST OF WINNERS** – Towel w/Logo  
**BEST OF OPPOSITE SEX** – Tumbler w/Logo  
**WINNERS DOG** – 2 qt Pail w/Logo  
**WINNERS BITCH** – 2 qt Pail w/Logo  
**SELECT DOG** – 2 qt Pail w/Logo  
**SELECT BITCH** – 2 qt Pail w/Logo  
**BEST OF BREED OWNER-HANDLED** – Cookie Jar w/Logo

### **MINIATURE AMERICAN SHEPHERD**

All prizes offered by Nancy Smith

**BEST OF BREED** – Dog Food Storage Bag w/Logo  
**BEST OF WINNERS** – Towel w/ Logo  
**BEST OF OPPOSITE SEX** – Tumbler with Logo  
**WINNERS DOG** – 2qt Pail w/logo  
**WINNERS BITCH** – 2qt Pail w/Logo  
**SELECT DOG** – 2qt Pail w/Logo  
**SELECT BITCH** – 2qt Pail w/Logo  
**BOBOH**- Cookie Jar w/Logo

**JUNIOR SHOWMANSHIP COMPETITION PRIZES**

**FOR BEST JUNIOR HANDLER**

\$1000.00 Scholarship Certificate

Offered by OZARKS KENNEL CLUB in Memory of Dr. Berndt, Lifetime Member

\$25.00 Gift Card offered by Bobby Brandon

ROSETTE

Offered by OZARK MOUNTAIN FALL CLASSIC

**FOR RESERVE BEST JUNIOR HANDLER**

\$15.00 Gift Card offered by Bobby Brandon

ROSETTE

Offered by OZARK MOUNTAIN FALL CLASSIC



# **Sunday, November 9, 2025**

## **Best In Show & Variety Group Prizes**

### **FOR BEST IN SHOW**

\$500.00 CASH offered by the OZARKS KENNEL CLUB

ROSETTE

Offered by the OZARK MOUNTAIN FALL CLASSIC

### **FOR RESERVE BEST IN SHOW**

\$250.00 CASH offered by the OZARKS KENNEL CLUB

ROSETTE

Offered by the OZARK MOUNTAIN FALL CLASSIC

### **FOR AKC NATIONAL OWNER-HANDLED BEST IN SHOW**

\$200.00 CASH offered by the OZARKS KENNEL CLUB

ROSETTE

Offered by the OZARK MOUNTAIN FALL CLASSIC

### **FOR AKC NATIONAL OWNER-HANDLED RESERVE BEST IN SHOW**

\$100.00 CASH offered by OZARKS KENNEL CLUB

ROSETTE

Offered by the OZARK MOUNTAIN FALL CLASSIC

### **FOR FIRST IN EACH VARIETY GROUP**

Cooler w/Logo offered by OZARKS KENNEL CLUB

ROSETTE

Offered by the OZARKS KENNEL CLUB

### **FOR FIRST, SECOND, THIRD & FOURTH IN EACH VARIETY GROUP**

ROSETTE

Offered by the OZARK MOUNTAIN FALL CLASSIC

### **FOR FIRST IN EACH AKC NATIONAL OWNER-HANDLED VARIETY GROUP**

Cooler w/Logo offered by OZARKS KENNEL CLUB

ROSETTE

Offered by the OZARKS KENNEL CLUB

### **FOR FIRST, SECOND, THIRD & FOURTH IN EACH AKC NATIONAL OWNER-HANDLED VARIETY GROUP**

ROSETTE

Offered by the OZARK MOUNTAIN FALL CLASSIC

### **BREED PRIZES**

A rosette will be given for Best of Breed in any breed having 10 or more entries in addition to any other listed prizes.

### **WORKING BREEDS**

#### **MASTIFF**

**BEST OF BREED** – Stained Glass Item offered by JT's Stained Glass

**WINNERS DOG / WINNERS BITCH** – Stained Glass Item offered by JT's Stained Glass

**BEST VETERAN** – Stained Glass Item offered by JT's Stained Glass

### **TERRIER BREEDS**

#### **AUSTRALIAN TERRIER**

All prizes offered by Vicki Karlovich

**BEST OF BREED** – Dog Food Storage Bag w/Logo

**BEST OF WINNERS** – Towel w/ Logo

**BEST OF OPPOSITE SEX** – Tumbler with Logo

**WINNERS DOG** – 2qt Pail w/logo

**WINNERS BITCH** – 2qt Pail w/Logo

**SELECT DOG** – 2qt Pail w/Logo

**SELECT BITCH** – 2qt Pail w/Logo

**BOBOH**- Cookie Jar w/Logo

**NORWICH TERRIER**

**BEST OF BREED OWNER-HANDLED** – Sponsored by Biwitched Kennel (Tobi Strickland)

#### **HERDING BREEDS**

**PEMBROKE WELSH CORGI**

**WINNERS DOG** – Vinyl Apron – Offered by Linda Williams (Crown Corgis)

#### **JUNIOR SHOWMANSHIP COMPETITION PRIZES**

##### **FOR BEST JUNIOR HANDLER**

\$1000.00 Scholarship Certificate

Offered by OZARKS KENNEL CLUB in Memory of Dr, Berndt, Lifetime Member

\$25.00 Gift Card offered by Bobby Brandon

ROSETTE

Offered by OZARK MOUNTAIN FALL CLASSIC

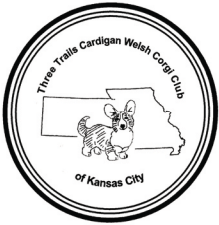
##### **FOR RESERVE BEST JUNIOR HANDLER**

\$15.00 Gift Card offered by Bobby Brandon

ROSETTE

Offered by OZARK MOUNTAIN FALL CLASSIC

Three Trails Cardigan Welsh Corgi Club of Kansas City  
Two Specialty Shows with Sweepstakes



**Friday, November 7, 2025 #2025606901**  
**Saturday, November 8, 2025 #2025606902**  
*(Both Shows Limited to 100 Entries)*

**OFFICERS**

Don Glenn ..... President  
Tom Stewart ..... Vice President  
Jacque Glenn ..... Treasurer  
Nancy Wilson ..... Secretary

*42 Winona Avenue, Lawrence, KS, 66046-4848*

**BOARD OF DIRECTORS**

Claudia Mitchell • Janet Stewart • Courtney Wissig • George Sutton • Dayl Phillip

Jacqueline Glenn ..... Event Chair  
*201 N Ward Rd, Raymore, MO 64083  
816-516-4720 • cardigan@peoplepc.com*

**EVENT COMMITTEE**

Jacqueline Glenn, Don Glenn, Tom Stewart, Nancy Wilson, Courtney Wissig

**JUDGES**

**Friday, November 7 2025**

Mr. Vincent J Savioli (93351) ..... 321 Forbush St, Boonton, Nj 07005  
*Conformation*

Kathy Davis ..... 435 N. Valley Drive, Apache Junction, AZ 85120  
*Puppy & Veteran Sweepstakes*

**Saturday, November 8, 2025**

Vivian Andre Moran (93751) ..... 400 Hickory Ridge Rd, Waddy, Ky 40076  
*Conformation*

Traci Genaw ..... 514 S. 113<sup>th</sup> Street, Mesa, AZ 85208  
*Puppy & Veteran Sweepstakes*

## Ribbon/Rosette Prizes

Regular Classes		Non-Regular Classes	
First Prize	Blue	First Prize	Rose
Second Prize	Red	Second Prize	Brown
Third Prize	Yellow	Third Prize	Light Green
Fourth Prize	White	Fourth Prize	Gray
Winners	Purple		
Reserve Winners	Purple/White	Best of Breed/Variety NOHS	Maroon
Best of Winners	Blue/White		
Best of Breed/Variety	Purple/Gold		
Best of Opposite Sex to			
Best of Breed/Variety	Red/White		
Select Dog/Bitch	Light Blue/White		

## Classifications

### Regular Classes for Dogs & Bitches

Puppy	Bred-by-Exhibitor Puppy
6 months & under 9 months	Bred-by-Exhibitor Adult
9 months & under 12 months	American Bred
Twelve to Eighteen Months	Open
	WINNERS

### Best of Breed (Variety) Competition

### Non-Regular (Additional) Classes Involving Single Dog Entries

**Veterans:** A class for dogs and bitches seven (7) years of age and older. Neutered dogs and spayed bitches are eligible for Veterans classes. Winners of the above classes are eligible to compete in the Best of Breed competition. **Note:** If a dog is entered in both the Veteran class and Best of Breed and is defeated in Veterans, the dog **CANNOT** be shown in Best of Breed.

**Award of Merit:** At the Judge's discretion, up to two (2) Award of Merits may be given to deserving entries in Best of Breed competition not including Best of Breed, Best of Winners, Best of Opposite to Best of Breed, Select Dog, Select Bitch.

## SWEEPSTAKES DIVISIONS AND DEFINITIONS

### Puppy Sweepstakes

The Three Trails Cardigan Welsh Corgi Club of Kansas City Sweepstakes is open to all Cardigan Welsh Corgis who on the day of the show, will be six (6) months of age and under eighteen (18) months of age. All dogs shown in Sweepstakes must also be entered in a regular class on the regular entry form. The Sweepstakes class must be indicated in the space provided as *"Additional Class"*

### The Following Classifications are for Dogs and Bitches

Puppy, 6 mos and under 9 mos • Puppy, 9 mos and under 12 mos  
12 mos and under 15 mos • 15 mos and under 18 mos.

### Veterans Sweepstakes

Veteran Sweepstakes is open to all Cardigan Welsh Corgis that are seven (7) years and over on the day of the show. Dogs shown in Veteran Sweepstakes need not be entered in another class at this show. Indicate your Veteran Sweepstakes Class with the age division in the space provided for *"Additional Class"* on the entry form. **Note:** Neutered dogs and spayed bitches are eligible for these classes

### The Following Classifications are for Dogs and Bitches

7 yrs and under 9 yrs • 9 yrs and under 11 yrs • 11 yrs and under 13 yrs • 13 yrs and over

### Sweepstakes Distribution of Prize Money

The club will retain 35% of the entry fees for expenses.

The remaining 65% will be divided within each class as follows

First Place - 40% • Second Place - 30% • Third Place - 20% • Fourth Place - 10%

**TROPHY LIST:**  
**FRIDAY, NOVEMBER 7, 2025**  
**SATURDAY, NOVEMBER 8, 2025**

Unless otherwise stated, the following prizes are offered through the generosity of the members and friends of the Three Trails Cardigan Welsh Corgi Club of Kansas City. The Three Trails Cardigan Welsh Corgi Club of Kansas City reserves the right to substitute a trophy of equal or greater value if a trophy should become unavailable.

**BREED PRIZES**

Rosettes offered by the Three Trails Cardigan Welsh Corgi Club of Kansas City for Best of Breed, Best of Winners, Best of Opposite Sex to Best of Breed, Select Dog, Select Bitch, Winners Bitch and Winners Dog

Best of Breed -- Ringside bag

Best of Opposite -- Tote bag

Winners Dog/Winners Bitch -- Waterproof apron

Select Dog/Select Bitch -- Key fob

**SWEEPSTAKES PRIZES (FRIDAY, NOVEMBER 7, 2025)**

Rosettes offered by the Three Trails Cardigan Welsh Corgi Club of Kansas City for Best Puppy in Sweepstakes, Best of Opposite Sex to Best Puppy in Sweepstakes, Best Veteran in Sweepstakes and Best Opposite Sex to Best Veteran in Sweepstakes.

Best in puppy sweeps-- Framed Bead and Wire Cardigan Suncatcher

Best Opp in puppy sweeps -- Framed Bead and Wire Cardigan Suncatcher

Best in Veteran Sweeps -- Vendor bucks/gift card

Best Opp Veteran Sweeps -- Vendor bucks/gift card

**SWEEPSTAKES PRIZES (SATURDAY, NOVEMBER 8, 2025)**

Rosettes will be offered by the Three Trails Cardigan Welsh Corgi Club of Kansas City for Best Puppy in Sweepstakes, Best of Opposite Sex to Best Puppy in Sweepstakes, Best Veteran in Sweepstakes and Best Opposite Sex to Best Veteran in Sweepstakes.

Best in puppy sweeps-- Framed Bead and Wire Cardigan Suncatcher

Best Opp in puppy sweeps -- Framed Bead and Wire Cardigan Suncatcher

Best in Veteran Sweeps -- Vendor bucks/gift card

Best Opp Veteran Sweeps -- Vendor bucks/gift card

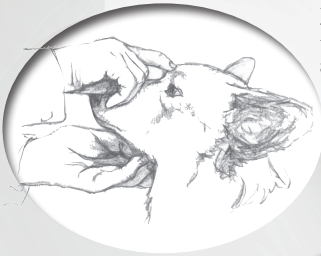
# Cardigan Welsh Corgi

Judges Education Seminar

Thursday November 6th

In conjunction with the  
North Arkansas KC shows  
and Three Trails Specialty.

**Seminar begins after  
Best In Show.**



- Ringside mentoring during Sweepstakes and Breed Judging.
- Start time for Sweeps TBD.
- Hands on after Breed Judging.
- Email **Patrick.A.Smith@att.net** if planning to attend and for more information.



my  **PURINA** APP

# SHOP. EARN. GET REWARDED.



**Earn, track and redeem** points on Purina purchases.



**Find the formula** that suits your pet's unique needs.



**Bond with your pet** as you explore the Train + Play content library.

Join the app that brings your pet and our passion together. With the myPurina app, you'll find support and rewards for being a great pet parent.

**DOWNLOAD  
TODAY**



Purina trademarks are owned by Société des Produits Nestlé S.A. Printed in USA.



Your Pet, Our Passion®

## Notice to Exhibitors

**Telephone Entries and Unsigned Entries Cannot Be Accepted. Entries Not On Official AKC Entry Forms and Photocopies of Entry Forms** without Agreement and Rules on the reverse side of the Official AKC Entry Form are **NOT ACCEPTABLE**.

**Mail All Entries With Fees to Foy Trent Dog Shows**, PO Box C, Sturgeon, MO. 65284.

**Entries received without fees will not be accepted.** Acknowledgment of entries will be made as soon as practicable after closing via mail or email. **Should acknowledgment not be received by the exhibitor** within a reasonable time. Please notify our office.

**Special Delivery & Overnight Delivery Mailing Address:**

**Foy Trent Dog Shows LLC** 113 W Smith St, Sturgeon, MO 65284

**Online Entries accepted online at [www.FoyTrentDogShows.com](http://www.FoyTrentDogShows.com)** for entries made with MasterCard/Visa. A \$3.00 charge will be added to each entry.

### No Faxed Entries Accepted

CANADIAN EXHIBITORS MUST SUBMIT ENTRIES WITH CHECKS DRAWN ON U.S. ACCOUNTS OR WITH INTERNATIONAL MONEY ORDERS IN U.S. FUNDS.

A Recording Fee of 50 cents for each dog and an AKC Event Service Fee of \$3.00 will be required for the first entry and \$3.50 for each additional entry at any Licensed or Member Club Show or Obedience Trial. (American Kennel Club Rule, Chapter 11, Section 2). A \$3.50 AKC Recording Fee will be required for each entry in Rally. (American Kennel Club Rally Regulation, Chapter 1, Section 5). A \$2.00 Event Service Fee will be required for each entry in 4-6 Month Beginner Puppy. \$2.00 Event Service Fee will be required for each entry in FSS Open Shows. These Fees are paid to the American Kennel Club.

**RETURNED CHECKS / INVALID CREDIT CARDS** do not constitute a valid entry. The Superintendent will add a collection fee of \$25 to the amount of each returned check and credit card. Subsequent returned checks and credit card from the same exhibitors may result in their being put on a cash-only basis. Entry Fee will not be refunded in the event that a dog is absent, disqualified, excused by Veterinarian or judge, or barred from competition by action of the Show Committee.

No entry fees will be refunded if the Show cannot open or be completed by reason of riots, civil disturbances, fire, extreme and or dangerous weather conditions, an Act of God, public emergency, act of public enemy, strikes or any other cause beyond the control of the Club or the Superintendent.

**No Refund for Duplicate Entries.** Every effort to find all duplicate entries will be made; however, if entry has been processed, no refund will be made.

Refunds made for cancellation of entries before the closing date will be subject to a \$3.00 administrative/processing fee per entry.

**No Entry** shall be made and no entry shall be accepted which specifies any conditions as to its acceptance. Changes, additions or corrections to entry forms must be received in writing prior to close of entries. Those received by telephone are not acceptable.

To find out about any AKC event cancellations, call the AKC Event Cancellation Hotline 877-252-3229.

Dogs need be present only for scheduled judging and will be released if not needed for further judging. Dogs must be ready for judging. Neither the club nor the Superintendent will be responsible or obligated to furnish any service for notifying exhibitors or their agents of Breed or Class judging.

Judges need not wait for any dog holding up the class. **Owners or agents alone are responsible for the presence of their dogs in the judging rings.**

Exhibitors should follow their veterinarian's recommendation to assure their dogs are free of internal and external parasites, any communicable diseases and have appropriate vaccinations.

**The show giving club, the Superintendent, their agents, employees, etc., assume no responsibility for any loss, damage, or injury sustained by exhibitors or handlers to any of their dogs or property, and further assume no responsibility for injury to children.**

**PUBLICATION RIGHTS** By entering this show, all owners, handlers, breeders and kennels agree that all rights to televise, videotape, photograph, advertise, promote and publicize or otherwise exploit this show, or the persons or animals participating in it or the results of the competition before, during or after the event, shall belong solely to The American Kennel Club and their respective assigns, including the use of the names, likenesses or biographical matter of all dogs, owners, handlers, breeders and kennels participating in the show and no such owner, handler, breeder or kennel shall allow any other party to make commercial use of any videotape or photograph of any person or animal participating in this competition.

1/1/2024





# OFFICIAL AMERICAN KENNEL CLUB ENTRY FORM

Three Trails Cardigan Welsh Corgi Club of Kansas City

Friday 11/7/25 [ ] Specialty with Sweepstakes #2025606901<sup>1</sup>

Saturday 11/8/25 [ ] Specialty with Sweepstakes #2025606902<sup>1</sup>

<sup>1</sup>Entries limited to 100

Ozark Empire Fairgrounds & Events Center, 3001 North Grant Ave, Springfield, MO 65803

Entries Open Friday, September 19, 2025 at 8am Central Time. Entries that are received prior to this date and time will be returned. Entries close 12:00 Noon, Central Time, Wednesday, October 22, 2025, or when numerical limits have been reached, if reached before this date, at Foy Trent Dog Shows LLC.

Mail Entries with fees made payable to Foy Trent Dog Shows LLC, PO Box C, Sturgeon, MO 65284, [www.foytrentdogshows.com](http://www.foytrentdogshows.com)

I ENCLOSE \$ ..... for entry fees (See page 3 for entry fees)

IMPORTANT-Read Carefully Instructions on Reverse Side Before Filling Out. Numbers in the boxes indicate sections of the instructions relevant to the information needed in that box (PLEASE PRINT)

BREED		VARIETY 1		SEX
DOG 2 3 SHOW CLASS		CLASS 3 DIVISION Weight, color, etc.		
ADDITIONAL CLASSES	OBEDIENCE CLASS (Jump Height)	RALLY CLASS (Jump Height)	JR. SHOWMANSHIP CLASS	
NAME OF (see Back) JUNIOR HANDLER (if any)			JR. HANDLER NUMBER	
FULL NAME OF DOG				
Enter number here <input type="checkbox"/> AKC* NO. <input type="checkbox"/> PAL/ILP NO. <input type="checkbox"/> FOREIGN REG NO. & COUNTRY		DATE OF BIRTH		
		PLACE OF (list country) BIRTH		
BREEDER				
SIRE				
DAM				

ACTUAL OWNER(S) _____ 4 (Please Print)	
OWNER'S ADDRESS _____	
CITY _____ STATE _____ ZIP _____	
NAME OF OWNER'S AGENT (IF ANY) AT THE SHOW _____	Owner-Handled eligible? Yes <input type="checkbox"/> No <input type="checkbox"/>

I CERTIFY that I am the actual owner of the dog, or that I am the duly authorized agent of the actual owner whose name I have entered above. In consideration of the acceptance of this entry, I (we) agree to abide by the rules and regulations of The American Kennel Club in effect at the time of this event, and by any additional rules and regulations appearing in the premium list for this event, and further agree to be bound by the "Agreement" printed on the reverse side of this entry form. I (we) certify and represent that the dog entered is not a hazard to persons or other dogs. This entry is submitted for acceptance on the foregoing representation and Agreement. I (we) agree to conduct myself (ourselves) in accordance with all such Rules and Regulations (including all provisions applying to discipline) and to abide by any decisions made in accord with them.

■ SIGNATURE of owner or his agent  
duly authorized to make this entry \_\_\_\_\_

TELEPHONE# \_\_\_\_\_ E-MAIL Address \_\_\_\_\_

☐ Check this box if you would like to receive confirmation & judging program by postal mail instead of email.

E-MAIL Address (An acknowledgment or receipt of entry will be sent to the email address, postal mail by request)

Emergency Contact \_\_\_\_\_ Telephone \_\_\_\_\_

## AGREEMENT

I (we) agree that the club holding this event has the right to refuse this entry for cause which the club shall deem sufficient. In consideration of the acceptance of this entry and of the holding of this event and of the opportunity to have the dog judged and to win prizes, ribbons, or trophies, I (we) agree to hold the AKC, the event-giving club, their members, directors, governors, officers, agents, superintendents or event secretary and the owner and/or lessor of the premises and any provider of services that are necessary to hold this event and any employees or volunteers of the aforementioned parties, and any AKC approved judge, judging at this event, harmless from any claim for loss or injury which may be alleged to have been caused directly or indirectly to any person or thing by the act of this dog while in or about the event premises or grounds or near any entrance thereto, and I (we) personally assume all responsibility and liability for any such claim; and I (we) further agree to hold the aforementioned parties harmless from any claim for loss, injury or damage to this dog. Additionally, I (we) hereby assume the sole responsibility for and agree to indemnify, defend and save the aforementioned parties harmless from any and all loss and expense (including legal fees) by reason of the liability imposed by law upon any of the aforementioned parties for damage because of bodily injuries, including death at any time resulting therefrom, sustained by any person or persons, including myself (ourselves), or on account of damage to property, arising out of or in consequence of my (our) participation in this event, however such injuries, death or property damage may be caused, and whether or not the same may have been caused or may be alleged to have been caused by the negligence of the aforementioned parties or any of their employees, agents, or any other persons. **I (WE) AGREE THAT ANY CAUSE OF ACTION, CONTROVERSY OR CLAIM ARISING OUT OF OR RELATED TO THE ENTRY, EXHIBITION OR ATTENDANCE AT THE EVENT BETWEEN THE AKC AND THE EVENT-GIVING CLUB (UNLESS OTHERWISE STATED IN ITS PREMIUM LIST) AND MYSELF (OURSELVES) OR AS TO THE CONSTRUCTION, INTERPRETATION AND EFFECT OF THIS AGREEMENT SHALL BE SETTLED BY ARBITRATION PURSUANT TO THE APPLICABLE RULES OF THE AMERICAN ARBITRATION ASSOCIATION. HOWEVER, PRIOR TO ARBITRATION ALL APPLICABLE AKC BYLAWS, RULES, REGULATIONS AND PROCEDURES MUST FIRST BE FOLLOWED AS SET FORTH IN THE AKC CHARTER AND BYLAWS, RULES, REGULATIONS, PUBLISHED POLICIES AND GUIDELINES.**

---

## INSTRUCTIONS

1. (Variety) if you are entering a dog of breed in which there are varieties for show purposes, please designate the particular variety you are entering, i.e., Cocker Spaniel (solid color black, ASCOB, parti-color), Beagles (not exceeding 13 in., over 13 in. but not exceeding 15 in.), Dachshunds (longhaired, smooth, wirehaired), Collies (rough, smooth), Bull Terriers (colored, white), Manchester Terriers (standard, toy), Chihuahuas (smooth coat, long coat), English Toy Spaniels (King Charles and Ruby, Blenheim and Prince Charles), Poodles (toy, miniature, standard).
2. The following categories of dogs may be entered and shown in Best of Breed competition: Dogs that are Champions of Record and dogs which, according to their owners' records, have completed the requirements for a championship, but whose championships are unconfirmed. The showing of unconfirmed Champions in Best of Breed competition is limited to a period of 90 days from the date of the show where the dog completed the requirements for a championship.
3. (Event Class) Consult the classification in this premium list. If the event class in which you are entering your dog is divided, then, in addition to designating the class, specify the particular division of the class in which you are entering your dog, i.e., age division, color division, weight division.
4. A dog must be entered in the name of the person who actually owned it at the time entries for an event closed. If a registered dog has been acquired by a new owner it must be entered in the name of its new owner in any event for which entries closed after the date of acquirement, regardless of whether the new owner has received the registration certificate indicating that the dog is recorded in his name. State on entry form whether transfer application has been mailed to the AKC. (For complete rules, refer to Chapter 11, Section 3.)
5. Mixed Breed dogs entering classes for Agility, Obedience, and Rally trials should mark Breed as AKC Canine Partners Listed Dog "All American Dog/Mixed Breed." Variety, Breeder, Sire, Dam information shall remain blank for mixed breed entrants.

---

If this entry is for Junior Showmanship, please give the following information:

JUNIOR SHOWMANSHIP

JR.'S DATE OF BIRTH \_\_\_\_\_

AKC JUNIOR HANDLER NUMBER \_\_\_\_\_

The above number MUST be included. Should you not have your Junior Handler number, this may be obtained from the American Kennel Club. Phone: (919) 233-9767.

**By signing the entry form I (we) certify that the Junior Showman does not now, and will not at any time, act as an agent/handler for pay while continuing to compete in Junior Showmanship.**

ADDRESS \_\_\_\_\_

CITY \_\_\_\_\_ STATE \_\_\_\_\_ ZIP \_\_\_\_\_



OFFICIAL AMERICAN KENNEL CLUB ENTRY FORM  
North Arkansas Kennel Club

Thursday 11/6/25 [ ] Conformation #2025246416<sup>1</sup>

Friday 11/7/25 [ ] Conformation #2025246417<sup>1</sup>

**Ozarks Kennel Club**

Saturday 11/8/25 [ ] Conformation #2025018803<sup>1</sup> [ ] 4-6 Mo Beg Puppy #2025018804

Sunday 11/9/25 [ ] Conformation #2025018805<sup>1</sup> [ ] 4-6 Mo Beg Puppy #2025018806

<sup>1</sup> Entries limited to 100

**Ozark Empire Fairgrounds & Events Center, 3001 North Grant Ave, Springfield, MO 65803**

**Entries Open Friday, September 19, 2025 at 8am Central Time. Entries that are received prior to this date and time will be returned. Entries close 12:00 Noon, Central Time, Wednesday, October 22, 2025, or when numerical limits have been reached, if reached before this date, at Foy Trent Dog Shows LLC.**

Mail Entries with fees made payable to **Foy Trent Dog Shows LLC, PO Box C, Sturgeon, MO 65284, [www.foytrentdogshows.com](http://www.foytrentdogshows.com)**

I ENCLOSE \$ ..... for entry fees (See page 3 for entry fees)

IMPORTANT-Read Carefully Instructions on Reverse Side Before Filling Out. Numbers in the boxes indicate sections of the instructions relevant to the information needed in that box (PLEASE PRINT)

BREED		VARIETY 1		SEX
DOG 2 3 SHOW CLASS			CLASS 3 DIVISION Weight, color, etc.	
ADDITIONAL CLASSES	OBEDIENCE CLASS (Jump Height)	RALLY CLASS (Jump Height)	JR. SHOWMANSHIP CLASS	
NAME OF (see Back) JUNIOR HANDLER (if any)			JR. HANDLER NUMBER	
FULL NAME OF DOG				
Enter number here		DATE OF BIRTH		
<input type="checkbox"/> AKC* NO. <input type="checkbox"/> PAL/ILP NO. <input type="checkbox"/> FOREIGN REG NO. & COUNTRY		PLACE OF (list country) BIRTH		
BREEDER				
SIRE				
DAM				

ACTUAL OWNER(S) 4 (Please Print)	
OWNER'S ADDRESS	
CITY	STATE ZIP
NAME OF OWNER'S AGENT (IF ANY) AT THE SHOW	
Owner-Handled eligible? Yes <input type="checkbox"/> No <input type="checkbox"/>	

I CERTIFY that I am the actual owner of the dog, or that I am the duly authorized agent of the actual owner whose name I have entered above. In consideration of the acceptance of this entry, I (we) agree to abide by the rules and regulations of The American Kennel Club in effect at the time of this event, and by any additional rules and regulations appearing in the premium list for this event, and further agree to be bound by the "Agreement" printed on the reverse side of this entry form. I (we) certify and represent that the dog entered is not a hazard to persons or other dogs. This entry is submitted for acceptance on the foregoing representation and Agreement. I (we) agree to conduct myself (ourselves) in accordance with all such Rules and Regulations (including all provisions applying to discipline) and to abide by any decisions made in accord with them.

■ SIGNATURE of owner or his agent  
duly authorized to make this entry \_\_\_\_\_

TELEPHONE# \_\_\_\_\_ E-MAIL Address \_\_\_\_\_

☐ Check this box if you would like to receive confirmation & judging program by postal mail instead of email.

E-MAIL Address (An acknowledgment or receipt of entry will be sent to the email address, postal mail by request)

Emergency Contact \_\_\_\_\_ Telephone \_\_\_\_\_

## AGREEMENT

I (we) agree that the club holding this event has the right to refuse this entry for cause which the club shall deem sufficient. In consideration of the acceptance of this entry and of the holding of this event and of the opportunity to have the dog judged and to win prizes, ribbons, or trophies, I (we) agree to hold the AKC, the event-giving club, their members, directors, governors, officers, agents, superintendents or event secretary and the owner and/or lessor of the premises and any provider of services that are necessary to hold this event and any employees or volunteers of the aforementioned parties, and any AKC approved judge, judging at this event, harmless from any claim for loss or injury which may be alleged to have been caused directly or indirectly to any person or thing by the act of this dog while in or about the event premises or grounds or near any entrance thereto, and I (we) personally assume all responsibility and liability for any such claim; and I (we) further agree to hold the aforementioned parties harmless from any claim for loss, injury or damage to this dog. Additionally, I (we) hereby assume the sole responsibility for and agree to indemnify, defend and save the aforementioned parties harmless from any and all loss and expense (including legal fees) by reason of the liability imposed by law upon any of the aforementioned parties for damage because of bodily injuries, including death at any time resulting therefrom, sustained by any person or persons, including myself (ourselves), or on account of damage to property, arising out of or in consequence of my (our) participation in this event, however such, injuries, death or property damage may be caused, and whether or not the same may have been caused or may be alleged to have been caused by the negligence of the aforementioned parties or any of their employees, agents, or any other persons. **I (WE) AGREE THAT ANY CAUSE OF ACTION, CONTROVERSY OR CLAIM ARISING OUT OF OR RELATED TO THE ENTRY, EXHIBITION OR ATTENDANCE AT THE EVENT BETWEEN THE AKC AND THE EVENT-GIVING CLUB (UNLESS OTHERWISE STATED IN ITS PREMIUM LIST) AND MYSELF (OURSELVES) OR AS TO THE CONSTRUCTION, INTERPRETATION AND EFFECT OF THIS AGREEMENT SHALL BE SETTLED BY ARBITRATION PURSUANT TO THE APPLICABLE RULES OF THE AMERICAN ARBITRATION ASSOCIATION. HOWEVER, PRIOR TO ARBITRATION ALL APPLICABLE AKC BYLAWS, RULES, REGULATIONS AND PROCEDURES MUST FIRST BE FOLLOWED AS SET FORTH IN THE AKC CHARTER AND BYLAWS, RULES, REGULATIONS, PUBLISHED POLICIES AND GUIDELINES.**

---

## INSTRUCTIONS

1. (Variety) if you are entering a dog of breed in which there are varieties for show purposes, please designate the particular variety you are entering, i.e., Cocker Spaniel (solid color black, ASCOB, parti-color), Beagles (not exceeding 13 in., over 13 in. but not exceeding 15 in.), Dachshunds (longhaired, smooth, wirehaired), Collies (rough, smooth), Bull Terriers (colored, white), Manchester Terriers (standard, toy), Chihuahuas (smooth coat, long coat), English Toy Spaniels (King Charles and Ruby, Blenheim and Prince Charles), Poodles (toy, miniature, standard).
2. The following categories of dogs may be entered and shown in Best of Breed competition: Dogs that are Champions of Record and dogs which, according to their owners' records, have completed the requirements for a championship, but whose championships are unconfirmed. The showing of unconfirmed Champions in Best of Breed competition is limited to a period of 90 days from the date of the show where the dog completed the requirements for a championship.
3. (Event Class) Consult the classification in this premium list. If the event class in which you are entering your dog is divided, then, in addition to designating the class, specify the particular division of the class in which you are entering your dog, i.e., age division, color division, weight division.
4. A dog must be entered in the name of the person who actually owned it at the time entries for an event closed. If a registered dog has been acquired by a new owner it must be entered in the name of its new owner in any event for which entries closed after the date of acquirement, regardless of whether the new owner has received the registration certificate indicating that the dog is recorded in his name. State on entry form whether transfer application has been mailed to the AKC. (For complete rules, refer to Chapter 11, Section 3.)
5. Mixed Breed dogs entering classes for Agility, Obedience, and Rally trials should mark Breed as AKC Canine Partners Listed Dog "All American Dog/Mixed Breed." Variety, Breeder, Sire, Dam information shall remain blank for mixed breed entrants.

---

If this entry is for Junior Showmanship, please give the following information:

JUNIOR SHOWMANSHIP

JR.'S DATE OF BIRTH \_\_\_\_\_

AKC JUNIOR HANDLER NUMBER \_\_\_\_\_

The above number MUST be included. Should you not have your Junior Handler number, this may be obtained from the American Kennel Club. Phone: (919) 233-9767.

**By signing the entry form I (we) certify that the Junior Showman does not now, and will not at any time, act as an agent/handler for pay while continuing to compete in Junior Showmanship.**

ADDRESS \_\_\_\_\_

CITY \_\_\_\_\_ STATE \_\_\_\_\_ ZIP \_\_\_\_\_